

Communication-Based Decomposition Mechanisms for Decentralized MDPs

Claudia V. Goldman

*Samsung Telecom Research Israel
Yakum, Israel*

C.GOLDMAN@SAMSUNG.COM

Shlomo Zilberstein

*Department of Computer Science
University of Massachusetts, Amherst, MA 01003 USA*

SHLOMO@CS.UMASS.EDU

Abstract

Multi-agent planning in stochastic environments can be framed formally as a decentralized Markov decision problem. Many real-life distributed problems that arise in manufacturing, multi-robot coordination and information gathering scenarios can be formalized using this framework. However, finding the optimal solution in the general case is hard, limiting the applicability of recently developed algorithms. This paper provides a practical approach for solving decentralized control problems when communication among the decision makers is possible, but costly. We develop the notion of communication-based mechanism that allows us to decompose a decentralized MDP into multiple single-agent problems. In this framework, referred to as decentralized semi-Markov decision process with direct communication (Dec-SMDP-Com), agents operate separately between communications. We show that finding an optimal mechanism is equivalent to solving optimally a Dec-SMDP-Com. We also provide a heuristic search algorithm that converges on the optimal decomposition. Restricting the decomposition to some specific types of local behaviors reduces significantly the complexity of planning. In particular, we present a polynomial-time algorithm for the case in which individual agents perform goal-oriented behaviors between communications. The paper concludes with an additional tractable algorithm that enables the introduction of human knowledge, thereby reducing the overall problem to finding the best time to communicate. Empirical results show that these approaches provide good approximate solutions.

1. Introduction

The decentralized Markov decision process has become a common formal tool to study multi-agent planning and control from a decision-theoretic perspective (Bernstein, Givan, Immerman, & Zilberstein, 2002; Becker, Zilberstein, Lesser, & Goldman, 2004; Guestrin & Gordon, 2002; Guestrin, Koller, & Parr, 2001; Nair, Tambe, Yokoo, Pynadath, & Marsella, 2003; Petrik & Zilberstein, 2007; Peshkin, Kim, Meuleau, & Kaelbling, 2000). Seuken and Zilberstein (2008) provide a comprehensive comparison of the existing formal models and algorithms. Decentralized MDPs complement existing approaches to coordination of multiple agents based on on-line learning and heuristic approaches (Wolpert, Wheeler, & Tumer, 1999; Schneider, Wong, Moore, & Riedmiller, 1999; Xuan, Lesser, & Zilberstein, 2001; Ghavamzadeh & Mahadevan, 2004; Nair, Tambe, Roth, & Yokoo, 2004).

Many challenging real-world problems can be formalized as instances of decentralized MDPs. In these problems, exchanging information constantly between the decision makers

is either undesirable or impossible. Furthermore, these processes are controlled by a group of decision makers that must act based on different partial views of the global state. Thus, a centralized approach to action selection is infeasible. For example, exchanging information with a single central controller can lead to saturation of the communication network. Even when the transitions and observations of the agents are independent, the global problem may not decompose into separate, individual problems, thus a simple parallel algorithm may not be sufficient. Choosing different local behaviors could lead to different global rewards. Therefore, agents may need to exchange information periodically and revise their local behaviors. One important point to understand the model we propose is that although eventually each agent will behave following some local behavior, choosing among possible behaviors requires information from other agents. We focus on situations in which this information is not freely available, but it can be obtained via communication.

Solving optimally a general decentralized control problem has been shown to be computationally hard (Bernstein et al., 2002; Pynadath & Tambe, 2002). In the worst case, the general problem requires a double-exponential algorithm¹. This difficulty is due to two main reasons: 1) none of the decision-makers has full-observability of the global system and 2) the global performance of the system depends on a global reward, which is affected by the agents' behaviors. In our previous work (Goldman & Zilberstein, 2004a), we have studied the complexity of solving optimally certain classes of Dec-MDPs and Dec-POMDPs². For example, we have shown that decentralized problems with independent transitions and observations are considerably easier to solve, namely, they are NP-complete. Even in these cases, agents' behaviors can be dependent through the global reward function, which may not decompose into separate local reward functions. The latter case has been studied within the context of auction mechanisms for weakly coupled MDPs by Bererton et al. (2003). In this paper, the solution to this type of more complex decentralized problems includes temporally abstracted actions combined with communication actions. Petrik and Zilberstein (2007) have recently presented an improved solution to our previous Coverage Set algorithm (Becker et al., 2004), which can solve decentralized problems optimally. However, the technique is only suitable when no communication between the agents is possible. Another recent study by Seuken and Zilberstein (2007a, 2007b) produced a more general approximation technique based on dynamic programming and heuristic search. While the approach shows better scalability, it remains limited to relatively small problems compared to the decomposition method presented here.

We propose an approach to approximate the optimal solutions of decentralized problems off-line. The main idea is to compute multiagent macro actions that necessarily end with communication. Assuming that communication incurs some cost, the communication policy is computed optimally, that is the algorithms proposed in this paper will compute the best time for the agents to exchange information. At these time points, agents attain full knowledge of the current global state. These algorithms also compute for each agent what domain actions to perform between communication, these are temporally abstracted actions that can be interrupted at any time. Since these behaviors are computed for each agent

1. Unless NEXP is different from EXP, we cannot prove the super-exponential complexity. But, it is generally believed that NEXP-complete problems require double-exponential time to solve optimally.
 2. In Dec-MDPs, the observations of all the agents are sufficient to determine the global state, while in Dec-POMDPs the global state cannot be fully determined by the observations.

separately and independently from each other, the final complete solution of communication and action policies is not guaranteed to be globally optimal. We refer to this approach as a communication-based decomposition mechanism: the algorithms proposed compute mechanisms to decompose the global behavior of the agents into local behaviors that are coordinated by communication. Throughout the paper, these algorithms differ in the space of behaviors in which they search: our solutions range from the most general search space available (leading to the optimal mechanism) to more restricted sets of behaviors.

The contribution of this paper is to provide a tractable method, namely communication-based decomposition mechanisms, to solve decentralized problems, for which no efficient algorithms currently exist. For general decentralized problems, our approach serves as a practical way to approximate the solution in a systematic way. We also provide an analysis about the bounds of these approximations when the local transitions are not independent. For specific cases, like those with independent transitions and observations, we show how to compute the optimal decompositions into local behaviors and optimal policies of communication to coordinate the agents' behaviors at the global level.

Section 3 introduces the notion of communication-based mechanisms. We formally frame this approach as a decentralized semi-Markov decision process with direct communication (Dec-SMDP-Com) in Section 4. Section 5 presents the decentralized multi-step backup policy-iteration algorithm that returns the optimal decomposition mechanism when no restrictions are imposed on the individual behaviors of the agents. Due to this generality, the algorithm is applicable in some limited domains. Section 6 presents a more practical solution, considering that each agent can be assigned local goal states. Assuming local goal-oriented behavior reduces the complexity of the problem to polynomial in the number of states. Empirical results (Section 6.2) support these claims. Our approximation mechanism can also be applied when the range of possible local behaviors are provided at design time. Since these predetermined local behaviors alone may not be sufficient to achieve coordination, agents still need to decide when to communicate. Section 7 presents a polynomial-time algorithm that computes the policy of communication, given local policies of domain actions. The closer the human-designed local plans are to local optimal behaviors, the closer our solution will be to the optimal joint solution. Empirical results for the Meeting under Uncertainty scenario (also known as the Gathering Problem in robotics, Suzuki and Yamashita, 1999) are presented in Section 7.1. We conclude with a discussion of the contributions of this work in Section 8.

2. The Dec-MDP model

Previous studies have shown that decentralized MDPs in general are very hard to solve optimally and off-line even when direct communication is allowed (Bernstein et al., 2002; Pynadath & Tambe, 2002; Goldman & Zilberstein, 2004a). A comprehensive complexity analysis of solving optimally decentralized control problems revealed the sources of difficulty in solving these problems (Goldman & Zilberstein, 2004a). Very few algorithms were proposed that can actually solve some classes of problems optimally and efficiently.

We define a general underlying process which allows agents to exchange messages directly with each other as a decentralized POMDP with direct communication:

Definition 1 (Dec-POMDP-Com) *A decentralized partially-observable Markov decision process with direct communication, Dec-POMDP-Com is given by the following tuple: $\overline{M} = \langle S, A_1, A_2, \Sigma, C_\Sigma, P, R, \Omega_1, \Omega_2, O, T \rangle$, where*

- *S is a finite set of world states, that are factored and include a distinguished initial state s^0 .*
- *A_1 and A_2 are finite sets of actions. a_i denotes the action performed by agent i .*
- *Σ denotes the alphabet of messages and $\sigma_i \in \Sigma$ represents an atomic message sent by agent i (i.e., σ_i is a letter in the language).*
- *C_Σ is the cost of transmitting an atomic message: $C_\Sigma : \Sigma \rightarrow \mathbb{R}$. The cost of transmitting a null message is zero.*
- *P is the transition probability function. $P(s'|s, a_1, a_2)$ is the probability of moving from state $s \in S$ to state $s' \in S$ when agents 1 and 2 perform actions a_1 and a_2 respectively. This transition model is stationary, i.e., it is independent of time.*
- *R is the global reward function. $R(s, a_1, a_2, s')$ represents the reward obtained by the system as a whole, when agent 1 executes action a_1 and agent 2 executes action a_2 in state s resulting in a transition to state s' .*
- *Ω_1 and Ω_2 are finite sets of observations.*
- *O is the observation function. $O(o_1, o_2|s, a_1, a_2, s')$ is the probability of observing o_1 and o_2 (respectively by the two agents) when in state s agent 1 takes action a_1 and agent 2 takes action a_2 , resulting in state s' .*
- *If the Dec-POMDP has a finite horizon, it is represented by a positive integer T . The notation τ represents the set of discrete time points of the process.*

The optimal solution of such a decentralized problem is a joint policy that maximizes some criteria—in our case, the expected accumulated reward of the system. A joint policy is a tuple composed of local policies for each agent, each composed of a policy of action and a policy of communication: i.e., a joint policy $\delta = (\delta_1, \delta_2)$, where $\delta_i^A : \Omega_i^* \times \Sigma^* \rightarrow A_i$ and $\delta_i^\Sigma : \Omega_i^* \times \Sigma^* \rightarrow \Sigma$. That is, a local policy of action assigns an action to any possible sequence of local observations and messages received. A local policy of communication assigns a message to any possible sequence of observations and messages received. In each cycle, agents can perform a domain action, then perceive an observation and then can send a message.

We assume that the system has independent observations and transitions (see Section 6.3 for a discussion on the general case). Given factored system states $s = (s_1, s_2) \in S$, the domain actions a_i and the observations o_i for each agent, the formal definitions³ for decentralized processes with independent transitions, and observations follow. We note that this class of problems is not trivial since the reward of the system is not necessarily independent. For simplicity, we present our definitions for the case of two agents. However, the approach presented in the paper is applicable to systems with n agents.

3. These definitions are based on Goldman and Zilberstein (2004a). We include them here to make the paper self-contained.

Definition 2 (A Dec-POMDP with Independent Transitions) *A Dec-POMDP has independent transitions if the set S of states can be factored into two components $S = S_1 \times S_2$ such that:*

$$\begin{aligned} \forall s_1, s'_1 \in S_1, \forall s_2, s'_2 \in S_2, \forall a_1 \in A_1, \forall a_2 \in A_2, \\ Pr(s'_1|(s_1, s_2), a_1, a_2, s'_2) = Pr(s'_1|s_1, a_1) \wedge \\ Pr(s'_2|(s_1, s_2), a_1, a_2, s'_1) = Pr(s'_2|s_2, a_2). \end{aligned}$$

In other words, the transition probability P of the Dec-POMDP can be represented as $P = P_1 \cdot P_2$, where $P_1 = Pr(s'_1|s_1, a_1)$ and $P_2 = Pr(s'_2|s_2, a_2)$.

Definition 3 (A Dec-POMDP with Independent Observations) *A Dec-POMDP has independent observations if the set S of states can be factored into two components $S = S_1 \times S_2$ such that:*

$$\begin{aligned} \forall o_1 \in \Omega_1, \forall o_2 \in \Omega_2, \forall s = (s_1, s_2), s' = (s'_1, s'_2) \in S, \forall a_1 \in A_1, \forall a_2 \in A_2, \\ Pr(o_1|(s_1, s_2), a_1, a_2, (s'_1, s'_2), o_2) = Pr(o_1|s_1, a_1, s'_1) \wedge \\ Pr(o_2|(s_1, s_2), a_1, a_2, (s'_1, s'_2), o_1) = Pr(o_2|s_2, a_2, s'_2) \end{aligned}$$

$$O(o_1, o_2|(s_1, s_2), a_1, a_2, (s'_1, s'_2)) = Pr(o_1|(s_1, s_2), a_1, a_2, (s'_1, s'_2), o_2) \cdot Pr(o_2|(s_1, s_2), a_1, a_2, (s'_1, s'_2), o_1).$$

In other words, the observation probability O of the Dec-POMDP can be decomposed into two observation probabilities O_1 and O_2 , such that $O_1 = Pr(o_1|(s_1, s_2), a_1, a_2, (s'_1, s'_2), o_2)$ and $O_2 = Pr(o_2|(s_1, s_2), a_1, a_2, (s'_1, s'_2), o_1)$.

Definition 4 (Dec-MDP) *A decentralized Markov decision process (Dec-MDP) is a Dec-POMDP, which is jointly fully observable, i.e., the combination of both agents' observations determine the global state of the system.*

In previous work (Goldman & Zilberstein, 2004a), we proved that Dec-MDPs with independent transitions and observations are locally fully-observable. In particular, we showed that exchanging the last observation is sufficient to obtain complete information about the current global state and it guarantees optimality of the solution.

We focus on the computation of the individual behaviors of the agents taking into account that they can exchange information from time to time. The following sections present the communication-based decomposition approximation method to solve Dec-MDPs with direct communication and independent transitions and observations.

3. Communication-based Decomposition Mechanism

We are interested in creating a mechanism that will tell us what individual behaviors are the most beneficial in the sense that these behaviors taken jointly will result in a good approximation of the optimal decentralized solution of the global system. Notice that even when the system has a global objective, it is not straightforward to compute the individual behaviors. The decision problem that requires the achievement of some global objective does not tell us which local goals each decision maker needs to reach in order to

maximize the value of a joint policy that reaches the *global* objective. Therefore, we propose communication-based decomposition mechanisms as a practical approach for approximating the optimal joint policy of decentralized control problems. Our approach will produce two results: 1) a set of temporarily abstracted actions for each global state and for each agent and 2) a policy of communication, aimed at synchronizing the agents' partial information at the time that is most beneficial to the system.

Formally, a communication-based decomposition mechanism CDM is a function from any global state of the decentralized problem to two single agent behaviors or policies: $CDM : S \rightarrow (Opt_1, Opt_2)$. In general, a mechanism can be applied to systems with n agents, in which case the decomposition of the decentralized process will be into n individual behaviors. In order to study communication-based mechanisms, we draw an analogy between temporary and local policies of actions and options. Options were defined by Sutton et al. (1999) as temporarily abstracted actions, formalized as triplets including a stochastic single-agent policy, a termination condition, and a set of states in which they can be initiated: $opt = \langle \pi : S \times A \rightarrow [0, 1], \beta : S^+ \rightarrow [0, 1], I \subseteq S \rangle$. An option is available in a state s if $s \in I$.

Our approach considers options with *terminal actions* (instead of terminal states). Terminal actions were also considered by Hansen and Zhou (2003) in the framework of indefinite POMDPs. We denote the domain actions of agent i as A_i . The set of terminal actions only includes the messages in Σ . For one agent, an option is given by the following tuple: $opt_i = \langle \pi : S_i \times \tau \rightarrow A_i \cup \Sigma, I \subseteq S_i \rangle$, i.e., an option is a non-stochastic policy from the agent's partial view (local states) and time to the set of its primitive domain actions and terminal actions. The local states S_i are given by the factored representation of the Dec-MDP with independent transitions and observations. Similarly, the transitions between local states are known since $P(s'|s, a_1, a_2) = P_1(s'_1|s_1, a_1) \cdot P_2(s'_2|s_2, a_2)$.

In this paper, we concentrate on terminal actions that are necessarily communication actions. We assume that all options are terminated whenever at least one of the agents initiates communication (i.e., the option of the message sender terminates when it communicates and the hearer's option terminates due to this external event). We also assume that there is joint exchange of messages, i.e., whenever one agent initiates communication, the global state of the system is revealed to all the agents receiving those messages: when agent 1 sends its observation o_1 to agent 2, it will also receive agent 2's observation o_2 . This exchange of messages will cost the system only once. Since we focus on finite-horizon processes, the options may also be artificially terminated if the time limit of the problem is reached. The cost of communication C_Σ may include, in addition to the actual transmission cost, the cost resulting from the time it takes to compute the agents' local policies.

Communication-based decomposition mechanisms enable the agents to operate separately for certain periods of time. The question, then, is how to design mechanisms that will approximate best the optimal joint policy of the decentralized problem. We distinguish between three cases: general options, restricted options, and predefined options.

General options are built from any primitive domain action and communication action given by the model of the problem. Searching over all possible pairs of local single-agent policies and communication policies built from these general options will lead to the best approximation. It is obtained when we compute the optimal mechanism among all possible mechanisms. Restricted options limit the space of feasible options to a much smaller set de-

finer using certain behavior characteristics. Consequently, we can obtain mechanisms with lower complexity. Such tractable mechanisms provide approximation solutions to decentralized problems for which no efficient algorithms currently exist. Obtaining the optimal mechanism for a certain set of restricted options (e.g., goal-oriented options) becomes feasible, as we show in Sections 4-6. Furthermore, sometimes, we may consider options that are pre-defined. For example, knowledge about effective individual procedures may already exist. The mechanism approach allows us to combine such domain knowledge into the solution of a decentralized problem. In such situations, where a mapping between global states and single-agent behaviors already exists, the computation of a mechanism returns the policy of communication at the meta-level of control that synchronizes the agents' partial information. In Section 7, we study a greedy approach for computing a policy of communication when knowledge about local behaviors is given.

Practical concerns lead us to the study of communication-based decomposition mechanisms. In order to design applicable mechanisms, two desirable properties need to be considered:

- **Computational complexity** — The whole motivation behind the mechanism approach is based on the idea that the mechanism itself has low computational complexity. Therefore, the computation of the CDM mapping should be practical in the sense that individual behaviors of each agent will have complexity that is lower than the complexity of the decentralized problem with free communication. There is a trade-off between the complexity of computing a mechanism and the global reward of the system. There may not be a simple way to split the decentralized process into separate local behaviors. The complexity characteristic should be taken into account when designing a mechanism; different mechanisms can be computed at different levels of difficulty.
- **Dominance** — A mechanism CDM_1 dominates another mechanism CDM_2 if the global reward attained by CDM_1 with some policy of communication is larger than the global reward attained by CDM_2 with any communication policy. A mechanism is *optimal* for a certain problem if there is no mechanism that dominates it.

4. Decentralized Semi-Markov Decision Problems

Solving decentralized MDP problems with a communication-based decomposition mechanism translates into computing the set of individual and temporally abstracted actions that each agent will perform together with a policy of communication that stipulates when to exchange information. Hereafter, we show how the problem of computing a mechanism can be formalized as a semi-Markov decision problem. In particular, the set of basic actions of this process is composed of the temporally abstracted actions together with the communication actions. The rest of the paper presents three algorithms aimed at solving this semi-Markov problem optimally. The algorithms differ in the sets of actions available to the decision-makers, affecting significantly the complexity of finding the decentralized solution. It should be noted that the optimality of the mechanism computed is conditioned on the assumptions of each algorithm (i.e., the first algorithm provides the optimal mechanism over all possible options, the second algorithm provides the optimal mechanism when local goals are assumed, and the last algorithm computes the optimal policy of communication assum-

ing that the local behaviors are given). Formally, a decentralized semi-Markov decision problem with direct communication (Dec-SMDP-Com) is given as follows:

Definition 5 (Dec-SMDP-Com) *A factored, finite-horizon Dec-SMDP-Com over an underlying Dec-MDP-Com \bar{M} is a tuple $\langle \bar{M}, Opt_1, Opt_2, P^N, R^N \rangle$ where:*

- $S, \Sigma, C_\Sigma, \Omega_1, \Omega_2, P, O$ and T are components of the underlying process \bar{M} defined in definitions 4 and 1.
- Opt_i is the set of actions available to agent i . It comprises the possible options that agent i can choose to perform, which terminate necessarily with a communication act: $opt_i = \langle \pi : S_i \times \tau \rightarrow A_i \cup \Sigma, I \subseteq S_i \rangle$.
- $P^N(s', t+N | s, t, opt_1, opt_2)$ is the probability of the system reaching state s' after exactly N time units, when at least one option terminates (necessarily with a communication act). This probability function is given as part of the model for every value of N , such that $t+N \leq T$. In this framework, after N time steps at least one agent initiates communication (for the first time since time t) and this interrupts the option of the hearer agent. Then, both agents get full observability of the synchronized state. Since the decentralized process has independent transitions and observations, P^N is the probability that either agent has communicated or both of them have. The probability that agent i terminated its option exactly at time $t+N$, P_i^N , is given as follows:

$$P_i^N(s'_i, t+N | s_i, t, opt_i) = \begin{cases} 1 & \text{if } (\pi_{opt_i}(s_i, t) \in \Sigma) \wedge (N=1) \wedge (s'_i = s_i) \\ 0 & \text{if } (\pi_{opt_i}(s_i, t) \in \Sigma) \wedge (N=1) \wedge (s'_i \neq s_i) \\ 0 & \text{if } (\pi_{opt_i}(s_i, t) \in A) \wedge (N=1) \\ 0 & \text{if } (\pi_{opt_i}(s_i, t) \in \Sigma) \wedge (N > 1) \\ \sum_{q_i \in S_i} P_i(q_i | s_i, \pi_{opt_i}(s_i, t)) P_i^N(s'_i, (t+1) + (N-1) | q_i, t+1, opt_i) & \text{if } (\pi_{opt_i}(s_i, t) \in A) \wedge (N > 1) \end{cases}$$

The single-agent probability is one when the policy of the option instructs the agent to communicate (i.e., $\pi_{opt_i}(s_i, t) \in \Sigma$), in which case the local process remains in the same local state.

We use the notation $s = (s_1, s_2)$ and $s' = (s'_1, s'_2)$ to refer to each agent's local state. Then, we denote by $\bar{P}_i^N(s'_i, t+N | s_i, t, opt_i)$ the probability that agent i will reach state s'_i in N time steps when it follows the option opt_i . It refers to the probability of reaching some state s'_i without having terminated the option necessarily when this state is reached. This transition probability can be computed recursively since the transition probability of the underlying Dec-MDP is known:

$$\bar{P}_i^N(s'_i, t+N | s_i, t, opt_i) = \begin{cases} P_i(s'_i | s_i, \pi_{opt_i}(s_i, t)) & \text{if } N=1 \\ \text{otherwise} & \\ \sum_{q_i \in S_i} P_i(s'_i | q_i, \pi_{opt_i}(q_i, t)) \bar{P}_i^N(s'_i, (t+1) + (N-1) | s_i, t+1, opt_i) & \end{cases}$$

Finally, we obtain that:

$$\begin{aligned} P^N(s', t+N | s, t, opt_1, opt_2) &= P_1^N(s'_1, t+N | s_1, t, opt_1) \cdot \bar{P}_2^N(s'_2, t+N | s_2, t, opt_2) + \\ &\quad P_2^N(s'_2, t+N | s_2, t, opt_2) \cdot \bar{P}_1^N(s'_1, t+N | s_1, t, opt_1) \\ &\quad - P_1^N(s'_1, t+N | s_1, t, opt_1) \cdot P_2^N(s'_2, t+N | s_2, t, opt_2) \end{aligned}$$

- $R^N(s, t, opt_1, opt_2, s', t+N)$ is the expected reward obtained by the system N time steps after the agents started options opt_1 and opt_2 respectively in state s at time t , when at least one of them has terminated its option with a communication act (resulting in the termination of the other agent's option). This reward is computed for $t+N \leq T$.

$$R^N(s, t, opt_1, opt_2, s', t+N) = \begin{cases} \bar{C}(opt_1, opt_2, s, s', N) & \text{if } t+N = T \\ \bar{C}(opt_1, opt_2, s, s', N) + C_\Sigma & \text{otherwise} \end{cases}$$

$\bar{C}(opt_1, opt_2, s, s', N)$ is the expected cost incurred by the system when it transitions between states s and s' and at least one agent communicates after N time steps. We define the probability of a certain sequence of global states being transitioned by the system when each agent follows its corresponding option as $P(\langle s^0, s^1, \dots, s^N \rangle)$:

$$P(\langle s^0, s^1, \dots, s^N \rangle) = \alpha \prod_{j=0}^{N-1} P(s^{j+1} | s^j, \pi_{opt_1}(s_1^j), \pi_{opt_2}(s_2^j))$$

α is a normalizing factor that makes sure that over all possible sequences, the probability adds up to one for a given s^0 , s^N and N steps going through intermediate steps s^1, \dots, s^{N-1} . Then, we denote by R_{seq} the reward attained by the system when it traverses a certain sequence of states. Formally, $R_{seq}(\langle s^0, \dots, s^N \rangle) = \sum_{j=0}^{N-1} R(s^j, \pi_{opt_1}(s_1^j), \pi_{opt_2}(s_2^j), s^{j+1})$ where $\pi_{opt_i}(s_i^j)$ refers to the primitive action that is chosen by the option at the local state s_i^j . Finally, we can define the expected cost $\bar{C}(opt_1, opt_2, s, s', N)$ as follows:

$$\bar{C}(opt_1, opt_2, s, s', N) = \sum_{q^1, \dots, q^{N-1} \in S} P(\langle s, q^1, \dots, q^{N-1}, s' \rangle) R_{seq}(\langle s, q^1, \dots, q^{N-1}, s' \rangle)$$

The dynamics of a semi-Markov decentralized process are as follows. Each agent performs its option starting in some global state s that is fully observed. Each agent's option is a mapping from local states to actions, so agent i starts the option in state s_i at time t until it terminates in some state s'_i , k time steps later. Whenever the options are terminated, the agents can fully observe the global state due to the terminal communication actions. If they reach state s' at time $t+k < T$, then the joint policy chooses a possible different pair of options at state s' at time $t+k$ and the process continues.

Communication in our model leads to a joint exchange of messages. Therefore all the agents observe the global state of the system once information is exchanged. This means that all those states of the decentralized semi-Markov process are *fully-observable* (as opposed to jointly fully-observable states as in the classical Dec-MDP-Com).

The local policy for agent i in the Dec-SMDP-Com is a mapping from the global states to its options (as opposed to a mapping from sequences of observations as in the general Dec-POMDP case, or a mapping from a local state as in the Dec-MDPs with independent transitions and observations):

$$\delta_i : S \times \tau \rightarrow Opt_i$$

A joint policy is a tuple of local policies, one for each agent, i.e., a joint policy instructs each agent to choose an option in each global state. Thus, solving for an optimal mechanism is equivalent to solving optimally a decentralized semi-Markov decision problems with temporally abstracted actions.

Lemma 1 *A Dec-SMDP-Com is equivalent to a multi-agent MDP.*

Proof. Multiagent MDPs (MMDPs) represent a Markov decision process that is controlled by several agents (Boutilier, 1999). One important feature of this model is that all the agents have a central view of the global state. Formally, MMDPs are tuples of the form $\langle Ag, \{A_i\}_{i \in Ag}, S, Pr, R \rangle$, where:

- Ag is a finite collection of n agents.
- $\{A_i\}_{i \in Ag}$ represents the joint action space.
- S is a finite set of system states.
- $Pr(s'|s, a_1, \dots, a_n)$ is the transition probability between global states s and s' when the agents perform a joint action.
- $R : S \rightarrow \mathfrak{R}$ is the reward that the system obtains when a global state is reached.

A decentralized semi-Markov problem with direct communication can be solved optimally by solving the corresponding MMDP. For simplicity of exposition we show the proof for systems with two agents. Following Definition 5, a 2-agent Dec-SMDP-Com is given by the tuple: $\langle \overline{M}, Opt_1, Opt_2, P^N, R^N \rangle$. The mapping between these two models is as follows: Ag is the same finite collection of agents that control the MMDP and the semi-Markov process. The set S is the set of states of the world in both cases. In the MMDP model, these states are fully observable by definition. In the semi-Markov decentralized model these global states are also fully observable because agents always exchange information at the end of any option that they perform. The set of joint actions $\{A_i\}_{i \in Ag}$ is given in the semi-Markov process as the set of options available to each agent (e.g., if $n = 2$ then $\{A_i\} = \{Opt_1, Opt_2\}$). The difference is that the joint actions are chosen from primitive domain actions in the MMDP and the options are temporarily abstracted actions which terminate with a communication act. The probability transition and the reward functions can be easily mapped between the models by matching P^N with Pr and R^N with R .

The solution to an MMDP (or Dec-SMDP-Com) problem is a strategy that assigns a joint action (or a set of options) to each global state. Solving an MMDP with actions given as options solves the semi-Markov problem. Solving a semi-Markov problem when the options are of length two, i.e., each option is composed of exactly one primitive action followed by a communication action that tells the agent to communicate its observation solves the corresponding MMDP problem. \square

Solving a decentralized semi-Markov process with communication is P-complete because of Lemma 1 and the polynomial complexity of single agent MDPs (Papadimitriou & Tsitsiklis, 1987). However, the input to this problem not only includes the states but also a double exponential number of domain actions for each agent. As explained in the next section, each option can be represented as a tree, where: 1) the depth of an option is limited by the finite horizon T and 2) the branching factor of an option is constrained by the number of states in S . Therefore, the maximal number of leaves an option might have is

bounded by $|S|^T$. Consequently, there can be $|A|^{|S|^T}$ assignments of primitive domain and communication acts to the leaves in each possible option.

The naive solution to a Dec-SMDP-Com problem is to search the space of all possible pairs of options and find the pair that maximizes the value of each global state. The multi-step policy-iteration algorithm, presented in Section 5, implements a heuristic version of this search that converges to the optimal mechanism. The resulting search space (after pruning) can become intractable for even very simple and small problems. Therefore, we propose to apply communication-based decomposition mechanisms on restricted sets of options. Solving a Dec-SMDP-Com with a restricted set of options means to find the optimal policy that attains the maximal value over all possible options in the restricted set (Sutton et al., 1999; Puterman, 1994). Sections 6 and 7 present two additional algorithms that solve Dec-SMDP-Com problems when the options considered are goal-oriented options, i.e., the mechanism assigns local goals to each one of the agents at each global state, allowing them to communicate before having reached their local goals.

5. Multi-step Backup Policy-Iteration for Dec-SMDP-Com

Solving a Dec-SMDP problem optimally means computing the optimal pair of options for each fully-observable global state. These options instruct the agents how to act independently of each other until information is exchanged. In order to find these options for each global state, we apply an adapted and extended version of the multi-step backup policy-iteration algorithm with heuristic search (Hansen, 1997). We show that the decentralized version of this algorithm converges to the optimal policy of the decentralized case with temporally abstracted actions.

We extend the model of the single-agent POMDP with observations costs to the Dec-SMDP-Com model. From a global perspective, each agent that follows its own option without knowing the global state of the system, is following an open-loop policy. However, locally, each agent is following an option, which does depend on the agent’s local observations. We first define a *multi-step backup* for options, when s and s' are global states of the decentralized problem: $V(s, t, T) =$

$$\max_{opt_1, opt_2 \in \text{OPT}_b} \left\{ \sum_{k=1}^{\min\{b, T-t\}} \sum_{s'} P^N(s', t+k | s, t, opt_1, opt_2) [R^N(s, t, opt_1, opt_2, s', t+k) + V(s', t+k, T)] \right\}$$

OPT_b is the set of options of length at most b , where the length is defined as follows:

Definition 6 (The length of an Option) *The length of an option is k if the option can perform at most k domain actions in one execution.*

As in Hansen’s work, b is a bound on the length of the options ($k \leq b$). Here, the finite horizon Dec-SMDP-Com case is analyzed, therefore $b \leq T$. $P^N(s', t+k | s, t, opt_1, opt_2)$ and $R^N(s, t, opt_1, opt_2, s', t+k)$ are taken from the Dec-SMDP-Com model (Definition 5).

We apply the multi-step backup policy-iteration algorithm (see Figure 2) using the pruning rule introduced by Hansen (1997), which we adapt to work on pairs of policies instead of linear sequences of actions. The resulting optimal multi-step backup policy is equivalent to the optimal policy of the MMDP (Lemma 1), i.e., it is equivalent to the optimal decentralized policy of a Dec-SMDP-Com with temporally abstracted actions. In order to

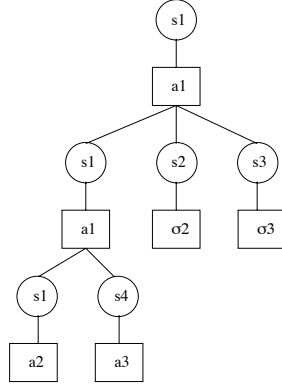


Figure 1: A policy tree of size $k=3$.

explain the pruning rule for the decentralized case with temporally abstracted actions, we define what policy-tree structures are.

Definition 7 (Policy-tree) A policy-tree is a tree structure, composed of local state nodes and corresponding action nodes at each level. Communication actions can only be assigned to leaves of the tree. The edges connecting an action a (taken at the parent state s_i) with a resulting state s'_i have the transition probability $P_i(s'_i|s_i, a)$ assigned to them.

Figure 1 shows a possible policy-tree. An option is represented by a policy-tree with all its leaves assigned communication actions. We denote a policy-tree $s_{root}\alpha$, by the state assigned to its root (e.g., s_{root}), and an assignment of domain actions and local states to the rest of the nodes (e.g., α). The size of a policy-tree is defined as follows:

Definition 8 (Size of a Policy-tree) The size of a policy-tree is k if the longest branch of the tree, starting from its root is composed of $k-1$ edges (counting the edges between actions and resulting states). A policy-tree of size one includes the root state and the action taken at that state.

$\pi(\alpha_k)$ is the policy induced by the assignment α with at most k actions in its implementation. The expected cost g of a policy-tree $s_{root}\alpha_k$ is the expected cost that will be incurred by an agent when it follows the policy $\pi(\alpha_k)$. We denote the set of nodes in a tree that do not correspond to leaves as NL and the set of states assigned to them S_{NL} . The notation $\alpha \setminus n$ refers to the α assignment excluding node n . The expected cost of a tree, $g(s_{root}\alpha_k)$, is computed as follows:

$$g(s_{root}\alpha_k) = \begin{cases} C(a_{root}) & \text{if } k = 1 \\ C(a_{root}) + \sum_{s'_i \in S_{NL}} [Pr(s'_i|s_{root}, a_{root})g(s'_i(\alpha \setminus root)_{k-1})] & \text{if } 1 < k \leq T \end{cases}$$

Since the decentralized process has factored states, we can write a global state s as a pair (s_1, s_2) . Each agent can act independently of each other for some period of time k while it performs an option. Therefore, we can refer to the information state of the system after k time steps as $s_1\alpha_k s_2\beta_k$, where $s_1\alpha_k$ and $s_2\beta_k$ correspond to each agent's policy tree of size k . We assume that at least one agent communicates at time $t+k$. This will necessarily

interrupt the other agent’s option at the same time $t+k$. Therefore, it is sufficient to look at pairs of trees of the same size k . The information state refers to the belief an agent forms about the world based on the partial information available to it while it operates locally. In our model, agents get full observability once they communicate and exchange their observations.

The heuristic function that will be used in the search for the optimal decentralized joint policy of the Dec-SMDP-Com follows the traditional notation, i.e., $f(s) = g(s) + h(s)$. In our case, these functions will be defined over pairs of policy-trees, i.e., $f(s\alpha_k\beta_k) = G(s\alpha_k\beta_k) + H(s\alpha_k\beta_k)$. The f value denotes the backed-up value for implementing policies $\pi(\alpha_k)$ and $\pi(\beta_k)$, respectively by the two agents, starting in state s at time t . The expected value of a state s at time t when the horizon is T is given by the multi-step backup for state s as follows:

$$V(s, t, T) = \max_{|\alpha|, |\beta| \leq b} \{f(s\alpha\beta)\}.$$

Note that the policy-trees corresponding to the assignments α and β are of size *at most* $b \leq T$. We define the expected cost of implementing a pair of policy-trees, G , as the sum of the expected costs of each one separately. If the leaves have communication actions, the cost of communication is taken into account in the g functions. As in Hansen’s work, when the leaves are not assigned a communication action, we assume that the agents can sense at no cost to compute the f function.

$$G(s_1\alpha_k s_2\beta_k) = g(s_1\alpha_k) + g(s_2\beta_k).$$

An option is a policy-tree with communication actions assigned to all its leaves. That option is denoted by $opt_1(\alpha_k)$ (or $opt_2(\beta_k)$). The message associated with a leaf corresponds to the local state that is assigned to that leaf by α (or β). We define the expected value of perfect information of the information state $s\alpha\beta$ after k time steps:

$$H(s\alpha_k\beta_k) = \sum_{s' \in S} P^N(s', t+k | s, t, opt_1(\alpha_k), opt_2(\beta_k)) V(s', t+k, T)$$

The multi-step backup policy-iteration algorithm adapted from Hansen to the decentralized control case appears in Figure 2. Intuitively, the heuristic search over all possible options unfolds as follows: Each node in the search space is composed of two policy-trees, each representing a local policy for one agent. The search advances through nodes whose f value (considering both trees) is greater than the value of the global root state (composed of the roots of both policy-trees). All nodes whose f value does not follow this inequality are actually pruned and are not used for updating the joint policy. The policy is updated when a node, composed of two options is found for which $f > V$. All the leaves in these options (at all possible depths) include communication acts. The updated policy δ' maps the global state s to these two options. When all the leaves in one policy-tree at current depth i have communication actions assigned, the algorithm assigns communication acts to all the leaves in the other policy-tree at this same depth. This change in the policies is correct because there is joint exchange of information (i.e., all the actions are interrupted when at least one agent communicates). We notice, though, that there may be leaves in these policy-trees at depths lower than i that may still have domain actions assigned. Therefore, these policy-trees cannot be considered options yet and they remain in the stack. Any leaves

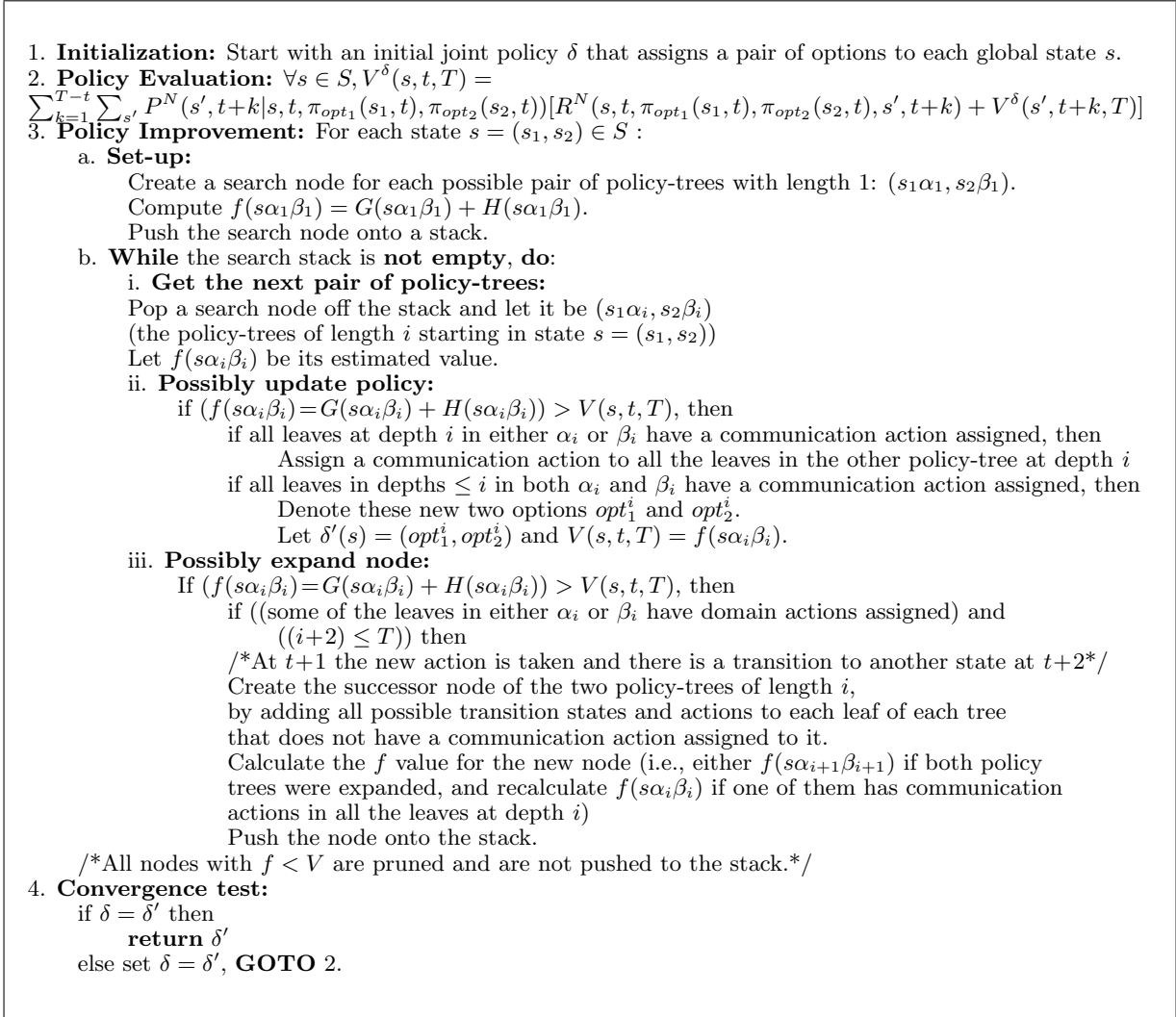


Figure 2: Multi-step Backup Policy-iteration (MSBPI) using depth-first branch-and-bound.

that remain assigned to domain actions will be expanded by the algorithm. This expansion requires the addition of all the possible next states, that are reachable by performing the domain-actions in the leaves, and the addition of a possible action for each such state. If all the leaves at depth i of one policy-tree are already assigned communication acts, then the algorithm expands only the leaves with domain actions at lower levels in both policy-trees. No leaf will be expanded beyond level i because at the corresponding time one agent is going to initiate communication and this option is going to be interrupted anyways.

In the next section, we show the convergence of our Multi-step Backup Policy-iteration (MSBPI) algorithm to the optimal decentralized solution of the Dec-SMDP-Com, when agents follow temporally abstracted actions and the horizon is finite.

5.1 Optimal Decentralized Solution with Multi-step Backups

In this section, we prove that the MSBPI algorithm presented in Figure 2 converges to the optimal decentralized control joint policy with temporally abstracted actions and direct communication. We first show that the policy improvement step in the algorithm based on heuristic multi-step backups improves the value of the current policy if it is sub-optimal. Finally, the policy iteration algorithm iterates over improving policies and it is known to converge.

Theorem 1 *When the current joint policy is not optimal, the policy improvement step in the multi-step backup policy-iteration algorithm always finds an improved joint policy.*

Proof. We adapt Hansen’s proof to our decentralized control problem, when policies are represented by policy-trees. Algorithm MSBPI in Figure 2 updates the current policy when the new policy assigns a pair of options that yield a greater value for a certain global state. We show by induction on the size of the options, that at least for one state, a new option is found in the improvement step (step 3.b.ii).

If the value of any state can be improved by two policy-trees of size one, then an improved joint policy is found because all the policy-trees of size one are evaluated. We initialized δ with such policy-trees. We assume that an improved joint policy can be found with policy-trees of size at most k . We show that an improved joint policy is found with policy-trees of size k . Lets assume that α_k is a policy tree of size k , such that $f(s\alpha_k\beta) > V(s)$ with communication actions assigned to its leaves. If this is the case then the policy followed by agent 2 will be interrupted at time k at the latest. One possibility is that $s\alpha_k\beta$ is evaluated by the algorithm. Then, an improved joint policy is indeed found. If this pair of policy-trees was not evaluated by the algorithm, it means that α was pruned earlier. We assume that this happened at level i . This means that $f(s\alpha_i\beta) < V(s)$. We assumed that $f(s\alpha_k\beta) > V(s)$ so we obtain that: $f(s\alpha_k\beta) > f(s\alpha_i\beta)$.

If we expand the f values in this inequality, we obtain the following:

$$g(s\alpha_i) + g(s\beta) + \sum_{s'} P^N(s', t+i|s, opt_1(\alpha_i), opt_2(\beta)) [g(s'\alpha(i, k)) + g(s'\beta) + \sum_{s''} P^N(s'', t+i+k-i)V(s'')] >$$

$$g(s\alpha_i) + g(s\beta) + \sum_{s'} P^N(s', t+i|s, opt_1(\alpha_k), opt_2(\beta))V(s', t+i)$$

where $g(s'\alpha(i, k))$ refers to the expected cost of the subtree starting at level i and ending at level k starting from s' . After simplification we obtain:

$$\sum_{s'} P^N(s', t+i|s, opt_1(\alpha_i), opt_2(\beta)) [g(s'\alpha(i, k)) + g(s'\beta) + \sum_{s''} P^N(s'', t+i+k-i)V(s'')] >$$

$$\sum_{s'} P^N(s', t+i|s, opt_1(\alpha_k), opt_2(\beta))V(s', t+i)$$

That is, there exists some state s' for which $f(s'\alpha(i, k)\beta) > V(s')$. Since the policy-tree $\alpha(i, k)$ has size less than k , by the induction assumption we obtain that there exists some state s' for which the multi-step backed-up value is increased. Therefore, the policy found in step 3.b.ii is indeed an improved policy. \square

Lemma 2 *The complexity of computing the optimal mechanism over general options by the MSBPI algorithm is $O(((|A_1| + |\Sigma|)(|A_2| + |\Sigma|))^{|S|^{(T-1)}})$. (General options are based on any possible primitive domain action in the model, and any communication act).*

Proof. Each agent can perform any of the primitive domain actions in A_i and can communicate any possible message in Σ . There can be at most $|S|^{(T-1)}$ leaves in a policy tree with horizon T and $|S|$ possible resulting states from each transition. Therefore, each time the MSBPI algorithm expands a policy tree (step 3.b.iii in Figure 2), the number of resulting trees is $((|A_1| + |\Sigma|)(|A_2| + |\Sigma|))^{|S|^{(T-1)}}$. In the worst case, this is the number of trees that the algorithm will develop in one iteration. Therefore, the size of the search space is a function of this number times the number of iterations until convergence. \square

Solving optimally a Dec-MDP-Com with independent transitions and observations has been shown to be in NP (Goldman & Zilberstein, 2004a). As we show here, solving for the optimal mechanism is harder, although the solution may not be the optimal. This is due to the main difference between these two problems. In the Dec-MDP-Com, we know that since the transitions and observations are independent, a local state is a sufficient statistic for the history of observations. However, in order to compute an optimal mechanism we need to search in the space of options, that is, no single local state is a sufficient statistic. When options are allowed to be general, the search space is larger since each possible option that needs to be considered can be arbitrarily large (with the length of each branch bounded by T). For example, in the Meeting under Uncertainty scenario (presented in Section 7.1), agents aim at meeting in a stochastic environment in the shortest time as possible. Each agent can choose to perform anyone of six primitive actions (four move actions, one stay action and a communication action). Even in a small world composed of 100 possible locations, implementing the MSBPI algorithm is intractable. It will require the expansion of all the possible combinations of pairs of policy-trees leading to a possible addition of $36^{100^{(T-1)}}$ nodes to the search space at each iteration. Restricting the mechanism to a certain set of possible options, for example goal-oriented options leads to a significant reduction in the complexity of the algorithm as we shown in the following two sections.

6. Dec-SMDP-Com with Local Goal-oriented Behavior

The previous section provided an algorithm that computes the optimal mechanism, searching over all possible combinations of domain and communication actions for each agent. On the one hand, this solution is the most general and does not restrict the individual behaviors in any aspect. On the other hand, this solution may require the search of a very large space, even after this space is pruned by the heuristic search technique. Therefore, in order to provide a practical decomposition mechanism algorithm, it is reasonable to restrict the mechanism to certain sets of individual behaviors. In this section, we concentrate on *goal-oriented options* and propose an algorithm that computes the optimal mechanism with respect to this set of options: i.e., the algorithm finds a mapping from each global state to a set of locally goal oriented behaviors with the highest value. The algorithm proposed has the same structure as the MSBPI algorithm; the main difference is in how the options are built.

Definition 9 (Goal-oriented Options) *A goal-oriented option is a local policy that achieves a given local goal.*

We study locally goal-oriented mechanisms, which map each global state to a pair of goal-oriented options and a period of time k . We assume here that a set of local goals \hat{G}_i is provided with the problem. For each such local goal, a local policy that can achieve it is considered a goal-oriented option. When the mechanism is applied, each agent follows its policy to the corresponding local goal for k time steps. At time $k + 1$, the agents exchange information and stop acting (even though they may not have reached their local goal). The agents, then, become synchronized and they are assigned possibly different local goals and a working period k' .

The algorithm presented in this section, LGO-MSBPI, solves the decentralized control problem with communication by finding the optimal mapping between global states to local goals and periods of time (the algorithm finds the best solution it can given that the agents will act individually for some periods of time). We start with an arbitrary joint policy that assigns one pair of local goal states and a number k to each global state. The current joint policy is evaluated and set as the current best known mechanism. Given a joint policy $\delta : S \times \tau \rightarrow \hat{G}_1 \times \hat{G}_2 \times \tau$, ($\hat{G}_i \subseteq S_i \subset S$), the value of a state s at a time t , when T is the finite horizon is given in Equation 1: (this value is only computed for states in which $t+k \leq T$).

$$V^\delta(s, t, T) = \begin{cases} 0 & \text{if } t=T \\ \sum_{s' \in S} P_g^N(s', t+k | s, t, \pi_{\hat{g}_1}(s_1), \pi_{\hat{g}_2}(s_2)) [R_g^N(s, t, \pi_{\hat{g}_1}, \pi_{\hat{g}_2}, s', k) + V^\delta(s', t+k, T)] & \text{s.t. } \delta(s, t) = (\hat{g}_1, \hat{g}_2, k) \end{cases} \quad (1)$$

Notice that $R_g^N(s, \pi_{\hat{g}_1}, \pi_{\hat{g}_2}, s', k)$ can be defined similarly to $R^N()$ (see Definition 5), taking into account that the options here are aimed at reaching a certain local goal state ($\pi_{\hat{g}_1}$ and $\pi_{\hat{g}_2}$ are aimed at reaching the local goal states \hat{g}_1 and \hat{g}_2 , respectively).

$$R_g^N(s, t, \pi_{\hat{g}_1}, \pi_{\hat{g}_2}, s', k) = \bar{C}(\pi_{\hat{g}_1}, \pi_{\hat{g}_2}, s, s', k) + C_\Sigma = \\ C_\Sigma + \sum_{q^1, \dots, q^{k-1}} P(\langle s, q^1, \dots, q^{k-1}, s' \rangle) \cdot C_{seq}(\langle s, q^1, \dots, s^{k-1}, s' \rangle)$$

There is a one-to-one mapping between goals and goal-oriented options. That is, the policy π_{g_i} assigned by δ can be found by each agent independently by solving optimally each agent's local process $MDP_i = (S_i, P_i, R_i, \hat{G}_i, T)$: The set of global states S is factored so each agent has its own set of local states. The process has independent transitions, so P_i is the primitive transition probability known when we described the options framework. R_i is the cost incurred by an agent when it performs a primitive action a_i and zero if the agent reaches a goal state in \hat{G}_i . T is the finite horizon of the global problem.

P_g^N (with the goal g subscript) is different from the probability function P^N that appears in Section 4. P_g^N is the probability of reaching a global state s' after k time steps, while trying to reach \hat{g}_1 and \hat{g}_2 respectively following the corresponding optimal local policies.

$$P_g^N(s', t+k | s, t+i, \pi_{\hat{g}_1}(s_1), \pi_{\hat{g}_2}(s_2)) =$$

$$\begin{cases} 1 & \text{if } i=k \text{ and } s=s' \\ 0 & \text{if } i=k \text{ and } s \neq s' \\ & \text{if } i < k \\ \sum_{s^* \in S} P(s^*|s, \pi_{\hat{g}_1}(s_1), \pi_{\hat{g}_2}(s_2)) \cdot P_g^N(s', t+k|s^*, t+i+1, \pi_{\hat{g}_1}(s_1^*), \pi_{\hat{g}_2}(s_2^*)) & \text{s.t. } \delta(s, t+i) = (\hat{g}_1, \hat{g}_2, k) \end{cases}$$

Each iteration of the LGO-MSBPI algorithm (shown in Figure 3) tries to improve the value of each state by testing all the possible pairs of local goal states with increasing number of time steps allowed until communication. The value of f is computed for each mapping from states to assignments of local goals and periods of time. The f function for a given global state, current time, pair of local goals and a given period of time k expresses the cost incurred by the agents after having acted for k time steps and having communicated at time $k+1$, and the expected value of the reachable states after k time steps (these states are those reached by the agents while following their corresponding optimal local policies towards \hat{g}_1 and \hat{g}_2 respectively). The current joint policy is updated when the f value for some state s , time t , local goals \hat{g}_1 and \hat{g}_2 and period k is greater than the value $V^\delta(s, t, T)$ computed for the current best known assignment of local goals and period of time. Formally:

$$f(s, t, \hat{g}_1, \hat{g}_2, k) = G(s, t, \hat{g}_1, \hat{g}_2, k) + H(s, t, \hat{g}_1, \hat{g}_2, k) \quad (2)$$

$$G(s, t, \hat{g}_1, \hat{g}_2, k) = \bar{C}(\pi_{\hat{g}_1}, \pi_{\hat{g}_2}, s, t, k) + C_\Sigma \quad (3)$$

$$H(s, t, \hat{g}_1, \hat{g}_2, k) = \begin{cases} 0 & \text{if } t=T \\ \sum_{s' \in S} P_g^N(s', t+k|s, t, \pi_{\hat{g}_1}(s_1), \pi_{\hat{g}_2}(s_2)) V^\delta(s', t+k, T) & \text{if } t < T \end{cases} \quad (4)$$

$\bar{C}(\pi_{\hat{g}_1}, \pi_{\hat{g}_2}, s, t, k)$ is the expected cost incurred by the agents when following the corresponding options for k time steps starting from state s . This is defined similarly to the expected cost explained in Definition 5. We notice that the computation of f refers to the goals being evaluated by the algorithm, while the evaluation of the policy (step 2) refers to the goals *assigned* by the current best policy.

6.1 Convergence of the Algorithm and Its Complexity

Lemma 3 *The algorithm LGO-MSBPI in Figure 3 converges to the optimal solution.*

Proof. The set of global states S and the set of local goal states $\hat{G}_i \subseteq S$ are finite. The horizon T is also finite. Therefore, step 3 in the algorithm will terminate. Like the classical policy-iteration algorithm, the LGO-MSBPI algorithm also will converge after a finite numbers of calls to step 3 where the policy can only improve its value from one iteration to another. \square

Lemma 4 *The complexity of computing the optimal mechanism based on local goal-oriented behavior following the LGO-MSBPI algorithm is polynomial in the size of the state space.*

Proof. Step 2 of the LGO-MSBPI algorithm can be computed with dynamic programming in polynomial time (the value of a state is computed in a backwards manner from a finite horizon T). The complexity of improving a policy in Step 3 is polynomial in the time,

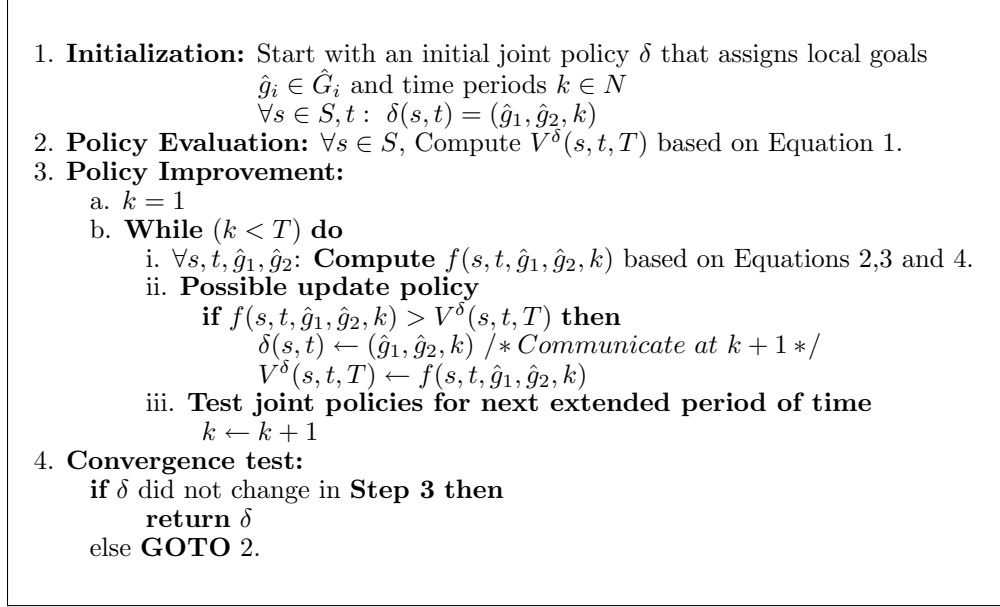


Figure 3: Multi-step Backup Policy-iteration with local goal-oriented behavior (LGO-MSBPI).

number of states and number of goal states, i.e., $O(T^2|S||\hat{G}|)$. In the worst case, every component of a global state can be a local goal state. However, in other cases, $|\hat{G}_i|$ can be much smaller than $|S_i|$ when \hat{G}_i is a strict subset of S_i , decreasing even more the running time of the algorithm. \square

6.2 Experiments - Goal-oriented Options

We illustrate the LGO-MSBPI decomposition mechanism in a production control scenario. We assume that there are two machines, which can control the production of boxes and cereals: machine M_1 can produce two types of boxes a or b . The amount of boxes of type a produced by this machine is denoted by B_a (B_b represents the amount of boxes of type b produced respectively). Machine M_2 can produce two kinds of cereals a and b . C_a (and C_b respectively) denotes the number of bags of cereals of type a (we assume that one bag of cereals is sold in one box of the same type). The boxes differ in their presentation so that boxes of type a advertise their content of type a and boxes of type b advertise their content of type b . We assume that at each discrete time t , machine M_1 may produce one box or no boxes at all, and the other machine may produce one bag of cereals or may produce no cereal at all. This production process is stochastic in the sense that the machines are not perfect: with probability P_{M_1} , machine one succeeds in producing the intended box (either a or b) and with probability $1 - P_{M_1}$, the machine does not produce any box in that particular time unit. Similarly, we assume P_{M_2} expresses the probability of machine two producing one bag of cereals of type a or b that is required for selling in one box. In this example, the reward attained by the system at T is equal to the number of products ready

for sale, i.e., $\min\{B_a, C_a\} + \min\{B_b, C_b\}$. A product that can be sold is composed of one box together with one bag of cereals corresponding to the type advertised in this box.

A goal-oriented option is given by the number of products that each machine should produce. Therefore, an option opt_i in this scenario is described by a pair of numbers (X_a, X_b) (when i is machine one then X refers to boxes and when i is machine two, X refers to bags of cereals). That is, machine i is instructed to produce X_a items of type a , followed by X_b items of type b , followed by X_a items of type a and so forth until either the time limit is over or anyone of the machines decides to communicate. Once the machines exchange information, the global state is revealed, i.e., the current number of boxes and cereals produced so far is known. Given a set of goal-oriented options, the LGO-MSBPI algorithm returned the optimal joint policy of action and communication that solves this problem. We counted the time units that it takes to produce the boxes with cereals. We compared the locally goal oriented multi-step backup policy iteration algorithm (LGO-MSBPI) with two other approaches: 1) the *Ideal* case when machines can exchange information about their state of production at each time and at no cost. This is an idealized case, since in reality exchanging information does incur some cost, for example changing the setting of a machine takes valuable time and 2) the *Always Communicate* ad-hoc case, when the machines exchange information at each time step and they also incur a cost when they do it. Tables 1, 2, and 3 present the average utility obtained by the production system when the cost of communication was set to -0.1 , -1 and -10 respectively, the cost of a domain action was set to -1 and the joint utility was averaged over 1000 experiments. A state is represented by the tuple (B_a, B_b, C_a, C_b) . The initial state was set to $(0,0,0,8)$, there were no boxes produced and there were already 8 bags of cereals of type B . The finite horizon T was set to 10. The set of goal-oriented options (X_a, X_b) tested included $(0,1), (1,4), (2,3), (1,1), (3,2), (4,1)$ and $(1,0)$.

P_{M_1}, P_{M_2}	Average Utility		
	Ideal $C_\Sigma = 0$	Always Communicate	LGO-MSBPI
0.2, 0.2	-17.012	-18.017	-17.7949
0.2, 0.8	-16.999	-17.94	-18.0026
0.8, 0.8	-11.003	-12.01	-12.446

Table 1: $C_\Sigma = -0.10$, $R_a = -1.0$.

P_{M_1}, P_{M_2}	Average Utility		
	Ideal $C_\Sigma = 0$	Always Communicate	LGO-MSBPI
0.2, 0.2	-17.012	-26.99	-19.584
0.2, 0.8	-16.999	-26.985	-25.294
0.8, 0.8	-11.003	-20.995	-17.908

Table 2: $C_\Sigma = -1.0$, $R_a = -1.0$.

The LGO-MSBPI algorithm computed a mechanism that resulted in three products on average when the uncertainty of at least one machine was set to 0.2 and 1000 tests were run, each for ten time units. The number of products increased on average between 8 to 9 products when the machines succeeded 80% of the cases. These numbers of products

P_{M_1}, P_{M_2}	Average Utility		
	Ideal $C_\Sigma = 0$	Always Communicate	LGO-MSBPI
0.2, 0.2	-17.012	-117	-17.262
0.2, 0.8	-16.999	-117.028	-87.27
0.8, 0.8	-11.003	-110.961	-81.798

Table 3: $C_\Sigma = -10.0$, $R_a = -1.0$.

were always attained either when the decomposition mechanism was implemented or when the ad-hoc approaches were tested. Ideal or Always Communicate algorithms only differ with respect to the cost of communication, and they do not differ in the actual policies of action. Although the machines incur a higher cost when the mechanism is applied compared to the ideal case (due to the cost of communication), the number of final products ready to sell were almost the same amount. That is, it will take some more time in order to produce the right amount of products when the policies implemented are those computed by the locally goal oriented multi-step backup policy iteration algorithm. The cost of communication in this scenario can capture the cost of changing the setting of one machine from one production program to another. Therefore, our result is significant when this cost of communication is very high compared to the time that the whole process takes. The decomposition mechanism finds what times are most beneficial to synchronize information when constant communication is not feasible nor desirable due to its high cost.

6.3 Generalization of the LGO-MSBPI Algorithm

The mechanism approach assumes that agents can operate independent of each other for some period of time. However, if the decentralized process has some kind of dependency in its observations or transitions, this assumption will be violated, i.e., the plans to reach the local goals can interfere with each other (the local goals may not be compatible). The LGO-MSBPI algorithm presented in this paper can be applied to Dec-MDPs when their transitions and observations are not assumed to be independent. In this section, we bound the error in the utilities of the options computed by the LGO-MSBPI algorithms when such dependencies do exist. We define Δ -independent decentralized processes to refer to *nearly-independent* processes whose dependency can be quantified by the cost of their marginal interactions.

Definition 10 (Δ -independent Process) Let $\bar{C}_{A_i}(s \rightarrow \hat{g}_k | \hat{g}_j)$ be the expected cost incurred by agent i when following its optimal local policy to reach local goal state \hat{g}_k from state s , while the other agent is following its optimal policy to reach \hat{g}_j . A decentralized control process is Δ -independent if $\Delta = \max\{\Delta_1, \Delta_2\}$, where Δ_1 and Δ_2 are defined as follows: $\forall \hat{g}_1, \hat{g}'_1 \in \hat{G}_1 \in S_1, \hat{g}_2, \hat{g}'_2 \in \hat{G}_2 \in S_2$ and $s \in S$:

$$\Delta_1 = \max_s \{ \max_{\hat{g}_1} \{ \max_{\hat{g}_2, \hat{g}'_2} \{ \bar{C}_{A_1}(s^0 \rightarrow \hat{g}_1 | \hat{g}'_2) - \bar{C}_{A_1}(s^0 \rightarrow \hat{g}_1 | \hat{g}_2) \} \} \}$$

$$\Delta_2 = \max_s \{ \max_{\hat{g}_2} \{ \max_{\hat{g}_1, \hat{g}'_1} \{ \bar{C}_{A_2}(s^0 \rightarrow \hat{g}_2 | \hat{g}'_1) - \bar{C}_{A_2}(s^0 \rightarrow \hat{g}_2 | \hat{g}_1) \} \} \}$$

That is, Δ is the maximal difference in cost that an agent may incur when trying to reach one local goal state that interferes with any other possible local goal being reached by the other agent.

The computation of the cost function $\bar{C}_{A_i}(s \rightarrow \hat{g}_k | \hat{g}_j)$ is domain dependent. We do not address the issue of how to compute this cost but we provide the condition. The individual costs of one agent can be affected by the interference that exists between some pair of local goals. For example, assume a 2D grid scenario: one agent can move only in four directions (north, south, east and west) and needs to reach location (9,9) from (0,0). The second agent is able of moving and also of collecting rocks and blocking squares in the grid. Assuming that the second agent is assigned the task of blocking all the squares in even rows, then the first agent’s solution to its task is constrained by the squares that are free to cross. In this case, agent one’s cost to reach (9,9) depends on the path it will choose that depends very strongly on the state of the grid resulting from the second agent’s actions.

The Δ value denotes the amount of interference that might occur between the agents’ locally goal-oriented behaviors. When the Dec-MDP has independent transitions and observations, the value of Δ is zero. The LGO-MSBPI algorithm proposed in this paper computes the mechanism for each global state as a mapping from states to pairs of local goal states ignoring the potential interference. Therefore, the difference between the actual cost that will be incurred by the options found by the algorithm and the optimal options can be at most Δ . Since the mechanism is applied for each global state for T time steps and this loss in cost can occur in the worst case for both agents, the algorithm presented here is $2T\Delta$ -optimal in the general case.

7. A Myopic-greedy Approach to Direct Communication

In some cases, it is reasonable to assume that *single-agent* behaviors are already known and fixed, ahead of time for any possible global state. For example, this may occur in settings where individual agents are designed ahead of the coordination time (e.g., agents in a manufacturing line can represent machines, which are built specifically to implement certain procedures). To achieve coordination, though, some additional method may be needed to synchronize these individual behaviors. In this section, we present how to apply the communication-based decomposition approach to compute the policy of communication that will synchronize the *given* goal-oriented options. We take a myopic-greedy approach that runs in polynomial-time: i.e., each time an agent makes a decision, it chooses the action with maximal expected accumulated reward assuming that agents are only able to communicate once along the whole process. Notice that the LGO-MSBPI was more general in the sense that it also computed *what* local goals should be pursued by each agent together with the communication policy that synchronizes their individual behaviors. Here, each time the agents exchange information, the mechanism is applied inducing two individual behaviors (chosen from the given mapping from states to individual behaviors). The given optimal policies of action (with no communication actions) are denoted δ_1^{A*} and δ_2^{A*} respectively.

The expected global reward of the system, given that the agents **do not communicate at all** and each follows its corresponding optimal policy δ_i^{A*} is given by the value of the initial state s^0 : $\Theta_{nc}^\delta(s^0, \delta_1^{A*}, \delta_2^{A*})$. This value can be computed by summing over all possible

next states and computing the probability of each agent reaching it, the reward obtained then and the recursive value computed for the next states.

$$\Theta_{nc}^\delta(s^0, \delta_1^{A*}, \delta_2^{A*}) = \sum_{(s'_1, s'_2)} P_1(s'_1 | s_1^0, \delta_1^{A*}(s_1^0)) \cdot P_2(s'_2 | s_2^0, \delta_2^{A*}(s_2^0)) (R(s^0, \delta_1^{A*}(s_1^0), \delta_2^{A*}(s_2^0), s') + \Theta_{nc}^\delta(s', \delta_1^{A*}, \delta_2^{A*}))$$

We denote the expected cost of the system computed by agent i , when the last synchronized state is s^0 , and **when the agents communicate once** at state s and continue without any communication, $\Theta_c(s^0, s_i, \delta_1^{A*}, \delta_2^{A*})$:

$$\Theta_c(s^0, s_1, \delta_1^{A*}, \delta_2^{A*}) = \sum_{s_2} \bar{P}_2(s_2 | s_2^0, \delta_2^{A*}) (\bar{R}(s^0, \delta_1^{A*}(s_1^0), \delta_2^{A*}(s_2^0), (s_1, s_2)) + \Theta_{nc}^\delta((s_1, s_2), \delta_1^{A*}, \delta_2^{A*}) + C_\Sigma \cdot Flag)$$

Flag is zero if the agents reached the global goal state before they reached state s . The time stamp in state s is denoted $t(s)$. $\bar{P}(s | s^0, \delta_1^{A*}, \delta_2^{A*})$ is the probability of reaching state s from state s^0 , following the given policies of action.

$$\bar{P}(s' | s, \delta_1^{A*}, \delta_2^{A*}) = \begin{cases} 1 & \text{if } s = s' \\ P(s' | s, \delta_1^{A*}(s_1), \delta_2^{A*}(s_2)) & \text{if } t(s') = t(s) + 1 \\ 0 & \text{if } t(s') < t(s) + 1 \\ \sum_{s'' \in S} \bar{P}(s' | s'', \delta_1^{A*}, \delta_2^{A*}) \cdot P(s'' | s, \delta_1^{A*}, \delta_2^{A*}) & \text{otherwise} \end{cases}$$

Similarly, \bar{P}_1 (\bar{P}_2) can be defined for the probability of reaching s'_1 (s'_2), given agent 1 (2)'s current partial view s_1 (s_2) and its policy of action δ_1^{A*} (δ_2^{A*}). The accumulated reward attained while the agents move from state s^0 to state s is given as follows:

$$\bar{R}(s^0, \delta_1^{A*}, \delta_2^{A*}, s) = \begin{cases} R(s^0, \delta_1^{A*}(s_1^0), \delta_2^{A*}(s_2^0), s) & \text{if } t(s) = t(s^0) + 1 \\ \sum_{s''} \bar{P}(s'' | \delta_1^{A*}, \delta_2^{A*}, s^0) \cdot P(s | \delta_1^{A*}, \delta_2^{A*}, s'') \cdot (\bar{R}(s^0, \delta_1^{A*}, \delta_2^{A*}, s'') + R(s'', \delta_1^{A*}(s_1''), \delta_2^{A*}(s_2''), s)) & \text{if } t(s) > t(s^0) + 1 \end{cases}$$

At each state, each agent decides whether to communicate its partial view or not based on whether the expected cost from following the policies of action, and having communicated is larger or smaller than the expected cost from following these policies of action and not having communicated.

Lemma 5 *Deciding a Dec-MDP-Com with the myopic-greedy approach to direct communication is in the P class.*

Proof. Each agent executes its known policy δ_i^{A*} when the mechanism is applied. If local goals are provided instead of actual policies, finding the optimal single-agent policies that reach those goal states can be done in polynomial time. The complexity of finding the communication policy is the same as dynamic programming (based on the formulas above), therefore computing the policy of communication is also in P. There are $|S|$ states for which Θ_{nc}^δ and Θ_c need to be computed, and each one of these formulas can be solved in time polynomial in $|S|$. \square

In previous work, we have also studied the set of *monotonic* goal-oriented Dec-MDPs, for which we provide an algorithm that finds the optimal policy of communication assuming a set of individual behaviors is provided (Goldman & Zilberstein, 2004b).

7.1 Meeting Under Uncertainty Example

We present empirical results obtained when the myopic-greedy approach was applied to the Meeting under Uncertainty example⁴. The testbed we consider is a sample problem of a Dec-MDP-Com involving two agents that have to meet at some location as early as possible. This scenario is also known as the gathering problem in robotics (Suzuki & Yamashita, 1999). The environment is represented by a 2D grid with discrete locations. In this example, any global state that can be occupied by both agents is considered a global goal state. The set of control actions includes moving North, South, East and West, and staying at the same location. Each agent’s partial view (which is locally fully-observable) corresponds to the agent’s location coordinates. The observations and the transitions are independent. The outcomes of the agents’ actions are uncertain: that is, with probability P_i , agent i arrives at the desired location after having taken a move action, but with probability $1 - P_i$ the agent remains at the same location. Due to this uncertainty in the effects of the agents’ actions, it is not clear that setting a predetermined meeting point is the best strategy for designing these agents. Agents may be able to meet faster if they change their meeting place after realizing their actual locations. This can be achieved by exchanging information on the locations of the agents, that otherwise are not observable. We showed that exchanging the last observation guarantees optimality in a Dec-MDP-Com process with constant message costs (Goldman & Zilberstein, 2004a). In the example tested, the messages exchanged correspond to the agents’ own observations, i.e., their location coordinates.

We have implemented the locally goal-oriented mechanism that assigns a single local goal to each agent at each synchronized state. These local goals were chosen as the location in the middle of the shortest Manhattan path between the agents’ locations (this distance is revealed when information is exchanged).

Intuitively, it is desirable for a mechanism to set a meeting place in the middle of the shortest Manhattan path that connects the two agents because in the absence of communication, the cost to meet at that point is minimal. This can be shown by computing the expected time to meet, Θ_{nc} , for any pair of possible distances between the two agents and any location in the grid, when no communication is possible. To simplify the exposition, we use a function that takes advantage of the specific characteristics of the example. The notation is as follows: agent 1 is at distance d_1 from the meeting location, agent 2 is at distance d_2 from that location, the system incurs a cost of one at each time period if the agents have not met yet. If both agents are at the meeting location, the expected time to meet is zero, $\Theta_{nc}(0, 0) = 0$. If only agent 2 is at the meeting location, but agent 1 has not reached that location yet, then the expected time to meet is given by

$$\begin{aligned} \Theta_{nc}(d_1, 0) &= P_1 \cdot (-1 + \Theta_{nc}(d_1 - 1, 0)) + (1 - P_1) \cdot (-1 + \Theta_{nc}(d_1, 0)) = \\ &= P_1 \cdot \Theta_{nc}(d_1 - 1, 0) + (1 - P_1) \cdot \Theta_{nc}(d_1, 0) - 1 \end{aligned}$$

That is, with probability P_1 agent 1 succeeds in decreasing its distance to the meeting location by one, and with probability $1 - P_1$ it fails and remains at the same location. Recursively, we can compute the remaining expected time to meet with the updated parameters. Similarly for agent 2: $\Theta_{nc}(0, d_2) = P_2 \cdot (-1 + \Theta_{nc}(0, d_2 - 1)) + (1 - P_2) \cdot (-1 + \Theta_{nc}(0, d_2))$. If none of the agents has reached the meeting place yet, then there are four different cases in which either both, only one, or none succeeded in moving in the right direction and either

4. Some of the empirical results in this section were described first by Goldman and Zilberstein (2003).

or not decreased their distances to the meeting location respectively:

$$\begin{aligned}
 \Theta_{nc}(d_1, d_2) &= P_1 \cdot P_2 \cdot (-1 + \Theta_{nc}(d_1-1, d_2-1)) + P_1 \cdot (1-P_2) \cdot (-1 + \Theta_{nc}(d_1-1, d_2)) + \\
 &\quad + (1-P_1) \cdot P_2 \cdot (-1 + \Theta_{nc}(d_1, d_2-1)) + (1-P_1) \cdot (1-P_2) \cdot (-1 + \Theta_{nc}(d_1, d_2)) = \\
 &= P_1 \cdot P_2 \cdot \Theta_{nc}(d_1-1, d_2-1) + P_1 \cdot (1-P_2) \cdot \Theta_{nc}(d_1-1, d_2) + (1-P_1) \cdot P_2 \cdot \Theta_{nc}(d_1, d_2-1) + \\
 &\quad + (1-P_1) \cdot (1-P_2) \cdot \Theta_{nc}(d_1, d_2) - 1
 \end{aligned}$$

The value of $\Theta_{nc}(d_1, d_2)$ was computed for all possible distances d_1 and d_2 in a 2D grid of size 10×10 . The minimal expected time to meet was obtained when $d_1 = d_2 = 9$ and the expected cost was -12.16 .

In summary, approximating the optimal solution to the Meeting under Uncertainty example when direct communication is possible and the mechanism applied is the one described above will unfold as follows: At time t_0 , the initial state of the system s^0 is fully observable by both agents. The agents set a meeting point in the middle of a Manhattan path that connects them. Denote by d_0 the distance between the agents at t_0 and $g_{t_0} = (g_{t_0}^1, g_{t_0}^2)$ the goal state set at t_0 . Each one of the agents can move optimally towards its corresponding component of g_{t_0} . Each agent moves independently in the environment because the transitions and observations are independent. Each time t , when the policy of communication instructs an agent to initiate exchange of information, the current Manhattan distance between the agents d_t is revealed to both. Then, the mechanism is applied, setting a possibly new goal state g_t , which decomposes into two components one for each agent. This goal state g_t is in the middle of the Manhattan path that connects the agents with length d_t revealed through communication.

7.2 Experiments - Myopic-greedy Approach

In the following experiments, we assumed that the transition probabilities P_1 and P_2 are equal. These uncertainties were specified by the parameter P_u . The mechanism that is applied whenever the agents communicate at time t results in each agent adopting a local goal state, that is set at the location in the middle of the Manhattan path connecting the agents (the Manhattan distance between the agents is revealed at time t). We compare the joint utility attained by the system in the following four different scenarios:

1. No-Communication — The meeting point is fixed at time t_0 and remains fixed along the simulation. It is located in the middle of the Manhattan path that connects between the agents, known at time t_0 . Each agent follows its optimal policy of action to this location without communicating.
2. Ideal — This case assumes that the agents can communicate freely ($C_\Sigma = 0$) at every time step resulting in the highest global utility that both agents can attain. Notice, though, that this is not the optimal solution we are looking for, because we do assume that communication is not free. Nevertheless, the difference in the utility obtained in these first two cases shed light on the trade-off that can be achieved by implementing non-free communication policies.
3. Communicate SubGoals — A heuristic solution to the problem, which assumes that the agents have a notion of sub-goals. They notify each other when these sub-goals are achieved, eventually leading the agents to meet.

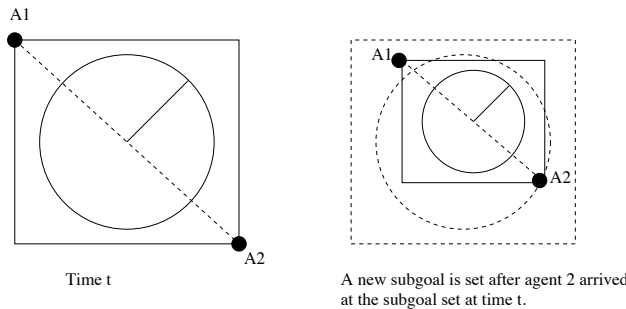


Figure 4: Goal decomposition into sub-goal areas.

4. Myopic-greedy Approach — Agents act myopically optimizing the choice of when to send a message, assuming no additional communication is possible. For each possible distance between the agents, a policy of communication is computed such that it stipulates the best time to send that message. By iterating on this policy agents are able to communicate more than once and thus approximate the optimal solution to the decentralized control problem with direct communication. The agents continue moving until they meet.

The solution to the No-Communication case can be solved analytically for the Meeting under Uncertainty example, by computing the expected cost $\Theta_{nc}(d_1, d_2)$ incurred by two agents located at distances d_1 and d_2 respectively from the goal state at time t_0 (the complete mathematical solution appears in Section 7.1). In the Ideal case, a set of 1000 experiments was run with cost of communication set to zero. Agents communicate their locations at every time instance, and update the location of the meeting place accordingly. Agents move optimally to the last synchronized meeting location.

For the third case tested (Communicate SubGoals) a sub-goal was defined by the cells of the grid with distance equal to $p \cdot d/2$ and with center located at $d/2$ from each one of the agents. p is a parameter of the problem that determines the radius of the circle that will be considered a sub-goal. Each time an agent reaches a cell inside the area defined as a sub-goal, it initiates exchange of information (therefore, p induces the communication strategy). d expresses the Manhattan distance between the two agents, this value is accurate only when the agents synchronize their knowledge. That is, at time t_0 the agents determine the first sub-goal as the area bounded by a radius of $p \cdot d_0/2$ and, which center is located at $d_0/2$ from each one of the agents. Each time t that the agents synchronize their information through communication, a new sub-goal is determined at $p \cdot d_t/2$. Figure 4 shows how new sub-goals are set when the agents transmit their actual location once they reached a sub-goal area. The meeting point is dynamically set at the center of the sub-goal area.

Experiments were run for the Communicate SubGoals case for different uncertainty values, values of the parameter p and costs of communication (for each case, 1000 experiments were run and averaged). These results show that agents can obtain higher utility by adjusting the meeting point dynamically rather than having set one fixed meeting point. Agents can synchronize their knowledge and thus they can set a new meeting location instead of acting as two independent MDPs that do not communicate and move towards a fixed meeting point (see Figure 5). Nevertheless, for certain values of p , the joint utility of the agents

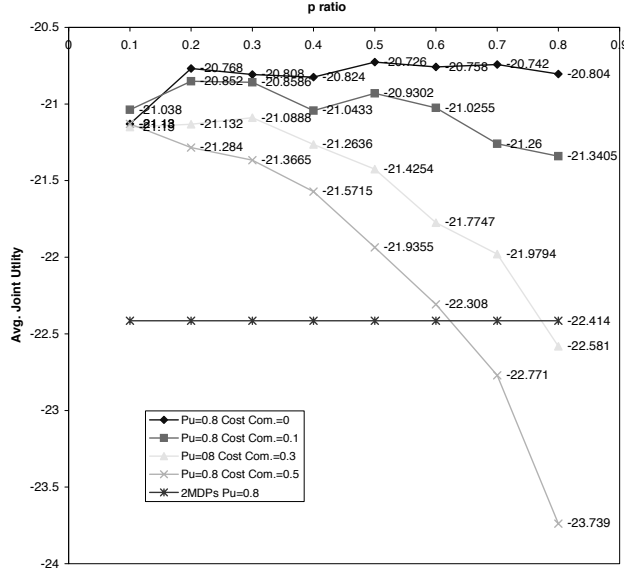


Figure 5: The average joint utility obtained when sub-goals are communicated.

is actually smaller than the joint utility achieved in the No-Communication case (2 MDPs in the figure). This points out the need to empirically tune up the parameters required by the heuristic.

In the Myopic-greedy case, we design the agents to optimize the time when they should send a message, assuming that they can communicate only once. At the off-line planning stage, the agents compute their expected joint cost to meet for any possible state of the system (s^0) and time t (included in the local state s_i), $\Theta_c(s^0, s_i, \delta_1^{A*}, \delta_2^{A*})$. The global states revealed through communication correspond to the possible distances between the agents. Each time the agents get synchronized, the mechanism is applied assigning local goals and instructing the agents to follow the optimal local policies to achieve them. In the Meeting under Uncertainty scenario we study, Θ_c is the expected joint cost incurred by taking control actions during t time steps, communicating then at time $t + 1$ if the agents have not met so far, and continuing with the optimal policy of control actions without communicating towards the goal state (the meeting location agreed upon at $t + 1$) at an expected cost of $\Theta_{nc}(d_1, d_2)$ as computed for the No-Communication case. When the agents meet before the t time steps have elapsed, they only incur a cost for the time they act before they met.

At each time t , each one of the agents knows a meeting location, that is the goal location computed from the last exchange of information. Consequently, each agent moves optimally towards this goal state. In addition, the myopic-greedy policy of communication is found by computing the earliest time t , for which $\Theta_c(d_1 + d_2, s_1, \delta_1^{A*}, \delta_2^{A*}) < \Theta_{nc}(d_1, d_2)$, that is, what is the best time to communicate such that the expected cost to meet is the least. The myopic-greedy policy of communication is a vector that states the time to communicate for each possible distance between the agents.

Tables 4, 5, and 6 present the myopic-greedy communication policies computed for the Meeting under Uncertainty problem with P_u values taken from $\{0.2, 0.4, 0.6, 0.8\}$. The cost of taking a control action is $R_a = -1.0$ and the costs of communicating C_Σ tested were

$\{-0.1, -1.0, -10.0\}$. Each row corresponds to a configuration tested with different state-transition uncertainties. Each column corresponds to a synchronized state, given by the possible Manhattan distance between the agents moving in a 2D grid of size 10x10. Given a certain value for P_u and a certain global distance, each agent interprets the value in any entry as the next time to communicate its position. Time is reset to zero when the agents exchange information. As long as the distance between the agents is larger and the communication cost increases, the policy instructs the agents to communicate later, i.e., the agents should keep operating until the information exchanged will have a better effect on the rescheduling of the meeting place.

P_u	d_0 =distance between agents when last synchronized, g located at $d_0/2$																	
	1	2	3	4	5	6	7	8	9	10	11	12	13	14	15	16	17	18
0.2	2	3	2	3	2	3	2	3	2	3	2	3	2	3	2	3	2	3
0.4	2	2	2	3	2	3	2	3	2	3	2	3	2	3	2	3	2	3
0.6	2	2	2	3	2	3	2	3	2	3	2	3	2	3	2	3	2	3
0.8	2	2	2	3	2	4	2	4	2	4	2	4	2	4	2	4	2	4

Table 4: Myopic-greedy policy of communication: $C_\Sigma = -0.1, R_a = -1.0$.

P_u	d_0 =distance between agents when last synchronized, g located at $d_0/2$																	
	1	2	3	4	5	6	7	8	9	10	11	12	13	14	15	16	17	18
0.2	3	4	3	5	3	6	4	7	4	7	5	7	5	8	5	8	6	9
0.4	2	3	3	4	4	5	4	6	5	7	5	7	6	8	6	8	7	9
0.6	2	2	3	4	4	5	5	6	6	7	6	8	7	8	7	9	8	10
0.8	2	2	3	3	4	4	5	5	6	6	7	7	8	8	9	9	10	10

Table 5: Myopic-greedy policy of communication: $C_\Sigma = -1.0, R_a = -1.0$.

P_u	d_0 =distance between agents when last synchronized, g located at $d_0/2$																	
	1	2	3	4	5	6	7	8	9	10	11	12	13	14	15	16	17	18
0.2	9	9	11	13	14	17	18	20	21	23	25	27	28	30	32	34	35	37
0.4	5	6	7	8	9	10	11	12	13	14	15	16	17	18	19	20	21	22
0.6	4	4	5	6	6	7	8	9	9	10	11	12	12	13	14	15	15	16
0.8	3	3	4	4	5	5	6	7	7	8	8	9	10	10	11	11	12	12

Table 6: Myopic-greedy policy of communication: $C_\Sigma = -10.0, R_a = -1.0$.

For the smallest cost of communication tested, it is always beneficial to communicate rather early, no matter the uncertainty in the environment, and almost no matter what d_0 is. For larger costs of communication and a given P_u , the larger the distance between the agents, the later they will communicate (e.g., when $P_u = 0.4, C_\Sigma = -1$ and $d = 5$, agents should communicate at time 4, but if $C_\Sigma = -10$, they should communicate at time 9). For a given C_Σ , the larger the distance between the agents is, the later the agents will communicate (e.g., when $P_u = 0.4, C_\Sigma = -10$ and $d = 5$, agents should communicate at time 9, but if $d = 12$, they should communicate at time 16). The results from averaging over 1000 runs show that for a given cost C_Σ as long as P_u decreases (the agent is more uncertain about its actions' outcomes), the agents communicate more times.

In the 1000 experiments run, the agents exchange information about their actual locations at the best time that was myopically found for d_0 (known to both at time t_0). After they communicate, they know the actual distance d_t , between them. The agents follow the same myopic-greedy communication policy to find the next time when they should communicate if they did not meet already. This time is the best time found by the myopic-greedy algorithm given that the distance between the agents was d_t . Iteratively, the agents approximate the optimal solution to the decentralized control problem with direct communication by following their independent optimal policies of action, and the myopic-greedy policy for communication. Results obtained from averaging the global utility attained after 1000 experiments show that these myopic-greedy agents can perform better than agents who communicate sub-goals (that was shown already to be more efficient than not communicating at all).

P_u	Average Joint Utility			
	No-Comm.	Ideal $C_\Sigma = 0$	SubGoals ⁵	Myopic-Greedy
0.2	-104.925	-62.872	-64.7399	-63.76
0.4	-51.4522	-37.33	-38.172	-37.338
0.6	-33.4955	-26.444	-27.232	-26.666
0.8	-24.3202	-20.584	-20.852	-20.704

Table 7: $C_\Sigma = -0.10$, $R_a = -1.0$.

The Myopic-greedy approach attained utilities statistically significantly greater than those obtained by the heuristic case when $C_\Sigma = -0.1$ (see Table 7)⁶. When $C_\Sigma = -0.1$ and $P_u = 0.4$, Myopic-greedy even attained utilities not significantly different (with significance level 98%) than Ideal.

P_u	Average Joint Utility				
	No-Comm.	Ideal $C_\Sigma = 0$	Comm. SubGoals - Best p	Myopic-greedy	
0.2	-104.925	-62.872	-65.906	0.3	-63.84
0.4	-51.4522	-37.33	-39.558	0.2	-37.774
0.6	-33.4955	-26.444	-27.996	0.2	-27.156
0.8	-24.3202	-20.584	-21.05	0.1	-21.3

Table 8: $C_\Sigma = -1.0$ in SubGoals and Myopic-greedy, $R_a = -1.0$.

P_u	Average Joint Utility				
	No-Comm.	Ideal $C_\Sigma = 0$	Comm. SubGoals - Best p	Myopic-greedy	
0.2	-104.925	-62.872	-69.286	0.1	-68.948
0.4	-51.4522	-37.33	-40.516	0.1	-40.594
0.6	-33.4955	-26.444	-28.192	0.1	-28.908
0.8	-24.3202	-20.584	-21.118	0.1	-22.166

Table 9: $C_\Sigma = -10.0$ in SubGoals and Myopic-greedy, $R_a = -1.0$.

5. The results are presented for the best p , found empirically.

6. Statistical significance has been established with t-test.

When $C_\Sigma = -1$ (see Table 8) the utilities attained for the Myopic-greedy approach when $P_u < 0.8$ are significantly greater than the results obtained in the heuristic case. When $P_u = 0.8$, the heuristic case was found to be better than Myopic-greedy for the best choice of p (Myopic-greedy obtained -21.3, and the SubGoals with $p = 0.1$ attained -21.05 (variance=2.18)). The utilities attained by the Myopic-greedy agents, when $C_\Sigma = -10$ (see Table 9) and P_u in $\{0.2, 0.4\}$, were not significantly different from the SubGoals case for the best p with significance levels 61% and 82%, respectively. However, the heuristic case yielded smaller costs for the other values of $P_u = \{0.6, 0.8\}$. One important point to notice is that these results consider the best p found for the heuristic after trying a set of discrete values for p (see the x-axis in Figure 5). In general trying and tuning a heuristic parameter can be very time consuming and the best choice may not be known ahead of time to the designer. On the other hand, the Myopic-greedy approach does not require any tuning of any parameter. In all the settings tested, Myopic-greedy always attain utilities higher than those attained in the SubGoals case with the worst p .

P_u	Average Communication Acts Performed			
	No-Comm.	Ideal $C_\Sigma = 0$	SubGoals	Myopic-greedy
0.2	0	31.436	5.4	21.096
0.4	0	18.665	1	11.962
0.6	0	13.426	1	8.323
0.8	0	10.292	1	4.579

Table 10: $C_\Sigma = -0.10$, $R_a = -1.0$.

P_u	Average Communication Acts Performed			
	No-Comm.	Ideal $C_\Sigma = 0$	Comm. SubGoals	Myopic-greedy
0.2	0	31.436	1.194	6.717
0.4	0	18.665	1	3.904
0.6	0	13.426	1	2.036
0.8	0	10.292	0	1.296

Table 11: $C_\Sigma = -1.0$ in Myopic-greedy and SubGoals, $R_a = -1.0$.

P_u	Average Communication Acts Performed			
	No-Comm.	Ideal $C_\Sigma = 0$	Comm. SubGoals	Myopic-greedy
0.2	0	31.436	0	0.416
0.4	0	18.665	0	0.417
0.6	0	13.426	0	0.338
0.8	0	10.292	0	0.329

Table 12: $C_\Sigma = -10.0$ in Myopic-greedy and SubGoals, $R_a = -1.0$.

Tables 10, 11 and 12 present the average number of communication acts performed in each one of these cases.

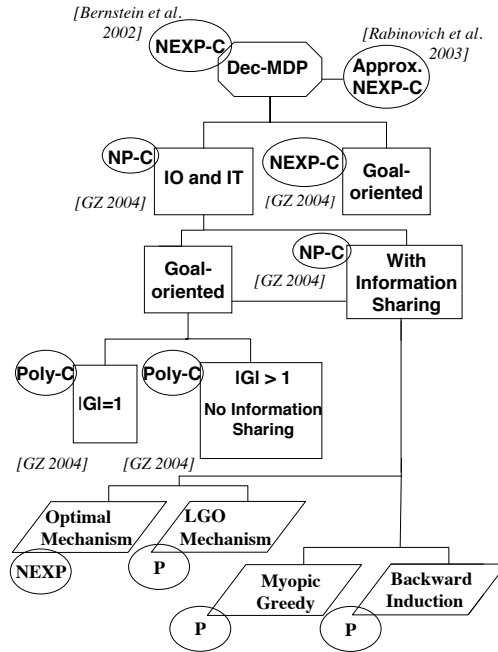


Figure 6: The complexity of solving Dec-MDPs.

8. Discussion

Solving *optimally* decentralized control problems is known to be very hard. Figure 6 summarizes the complexity results (the rectangles stand for optimal solutions while the parallelograms stand for solutions proposed in the framework of communication-based decomposition mechanisms). This taxonomy helps us understand the characteristics of different classes of decentralized control problems and their effect on the *complexity* of these problems. The Coverage-set (Becker et al., 2004), Opt1Goal and OptNGoals (Goldman & Zilberstein, 2004a) were the first algorithms to solve optimally some non-trivial classes of Dec-MDPs.

This paper presents communication-based decomposition mechanisms as a way to approximate the optimal joint solution of decentralized control problems. This approach is based on two key ideas: (1) separating the questions of *when* to communicate and *what* to do between communications, and (2) exploiting the full observability of the global states after each communication to generate *individual* behaviors that the agents will follow between communications. Communication between the decision makers serves as a synchronization point where local information is exchanged in order to assign an individual behavior to each controller. This addresses effectively applications in which constant communication is not desirable or not feasible. Many practical reasons could prevent agents from communication constantly. Communication actions may incur some costs that reflect the complexity of transmitting the information, the utilization of limited bandwidth that may be shared with other applications, or the risk of revealing information to competitive parties operating in the same environment. Our communication-based decomposition mechanism divides the global problem into individual behaviors combined with communication acts to overcome the lack of global information.

We formalized communication-based decomposition mechanisms as a decentralized semi-Markov process with communication (Dec-SMDP-Com). We proved that solving optimally such problems with temporally abstracted actions is equivalent to solving optimally a multi-agent MDP (MMDP). We adapted the multi-step backup policy iteration algorithm to the decentralized case that can solve the Dec-SMDP-Com problem optimally. This algorithm produces the optimal communication-based decomposition mechanism. To provide a tractable algorithm, we can restrict the set of individual behaviors that are allowed. We proposed the LGO-MSBPI polynomial-time algorithm that computes the assignment of a pair of local goals and period of time k with the highest value to each possible global state. Adding local goals to the model seems more natural and intuitive than computing local behaviors based on general options. It is easier to state when a local behavior is completed when some local goal is reached, rather than stating sequences of local actions that eventually should achieve some desired global behavior. Furthermore, an unrestricted set of options is larger and therefore it is computationally cheaper to compute the decomposition mechanism when local goals are assumed. This intuition is confirmed by our experiments. But the general question remain open, namely to determine when it is beneficial to compute local behaviors out of general options rather than assuming local goals.

The paper also presents a simpler approximation method. It assumes that a certain mechanism is given, i.e., human knowledge is incorporated into the model to provide agents with individual policies of actions (not including communication acts). A greedy-approach is presented that computes the best time to communicate assuming there is only one opportunity for exchanging information. The paper concludes with an empirical assessment of these approaches.

In summary, this paper contributes a communication-based decomposition mechanism that can be applied to many of the hard decentralized control problems shown in Figure 6. This approach enables us to compute tractable individual behaviors for each agent together with the most beneficial time to communicate and change these local behaviors. The analytical results in the paper support the validity of the approach with respect to Dec-MDPs with independent transitions and observations. However, it is straightforward to apply the approach to general Dec-POMDPs or Dec-MDPs with dependent transitions or observations, and we believe it offers a viable approximation technique for these problems as well. Our approach is scalable with respect to the number of agents since all the complexity results presented will increase linearly as more agents are added to the system. Exchange of information is assumed to be via a broadcast to all the other agents. An interesting future extension is to study how agents can efficiently choose partners for communication to avoid global broadcasting.

Acknowledgments

This work was supported in part by the National Science Foundation under grants IIS-0219606, by the Air Force Office of Scientific Research under grants F49620-03-1-0090 and FA9550-08-1-0181, and by NASA under grant NCC 2-1311. Any opinions, findings, and conclusions or recommendations expressed in this material are those of the authors and do not reflect the views of the NSF, AFOSR or NASA.

References

- Becker, R., Zilberstein, S., Lesser, V., & Goldman, C. V. (2004). Solving transition independent decentralized MDPs. *Journal of Artificial Intelligence Research*, 22, 423–455.
- Bererton, C., Gordon, G., Thrun, S., & Khosla, P. (2003). Auction mechanism design for multi-robot coordination. In *Proceedings of the Seventeenth Annual Conference on Neural Information Processing Systems*, Whistler, BC, Canada.
- Bernstein, D., Givan, R., Immerman, N., & Zilberstein, S. (2002). The complexity of decentralized control of Markov decision processes. *Mathematics of Operations Research*, 27(4), 819–840.
- Boutilier, C. (1999). Sequential optimality and coordination in multiagent systems. In *Proceedings of the Sixteenth International Joint Conference on Artificial Intelligence*, pp. 478–485, Stockholm, Sweden.
- Ghavamzadeh, M., & Mahadevan, S. (2004). Learning to act and communicate in cooperative multiagent systems using hierarchical reinforcement learning. In *Proceedings of the Third International Joint Conference on Autonomous Agents and Multi-Agent Systems*, pp. 1114–1121, New York City, NY.
- Goldman, C. V., & Zilberstein, S. (2003). Optimizing information exchange in cooperative multi-agent systems. In *Proceedings of the Second International Joint Conference on Autonomous Agents and Multi-Agent Systems*, pp. 137–144, Melbourne, Australia.
- Goldman, C. V., & Zilberstein, S. (2004a). Decentralized control of cooperative systems: Categorization and complexity analysis. *Journal of Artificial Intelligence Research*, 22, 143–174.
- Goldman, C. V., & Zilberstein, S. (2004b). Goal-oriented Dec-MDPs with direct communication. Technical Report 04–44, University of Massachusetts at Amherst, Computer Science Department.
- Guestrin, C., & Gordon, G. (2002). Distributed planning in hierarchical factored MDPs. In *Proceedings of the Eighteenth Conference on Uncertainty in Artificial Intelligence*, pp. 197–206, Edmonton, Canada.
- Guestrin, C., Koller, D., & Parr, R. (2001). Multiagent planning with factored MDPs. In *Advances in Neural Information Processing Systems*, pp. 1523–1530, Vancouver, British Columbia.
- Hansen, E. A. (1997). Markov decision processes with observation costs. Technical Report 97-01, University of Massachusetts at Amherst, Computer Science Department.
- Hansen, E. A., & Zhou, R. (2003). Synthesis of hierarchical finite-state controllers for POMDPs. In *Proceedings of the Thirteenth International Conference on Automated Planning and Scheduling*, Trento, Italy.
- Nair, R., Tambe, M., Roth, M., & Yokoo, M. (2004). Communication for improving policy computation in distributed POMDPs. In *Proceedings of the Third International Joint Conference on Autonomous Agents and Multi-Agent Systems*, pp. 1098–1105, New York City, NY.

- Nair, R., Tambe, M., Yokoo, M., Pynadath, D., & Marsella, S. (2003). Taming decentralized POMDPs: Towards efficient policy computation for multiagent settings. In *Proceedings of the Eighteenth International Joint Conference on Artificial Intelligence*, pp. 705–711, Acapulco, Mexico.
- Papadimitriou, C. H., & Tsitsiklis, J. (1987). The complexity of Markov decision processes. *Mathematics of Operations Research*, 12(3), 441–450.
- Peshkin, L., Kim, K.-E., Meuleau, N., & Kaelbling, L. P. (2000). Learning to cooperate via policy search. In *Proceedings of the Sixteenth Conference on Uncertainty in Artificial Intelligence*, pp. 489–496, Stanford, CA.
- Petrik, M., & Zilberstein, S. (2007). Anytime coordination using separable bilinear programs. In *Proceedings of the Twenty Second Conference on Artificial Intelligence*, pp. 750–755, Vancouver, BC, Canada.
- Puterman, M. L. (1994). *Markov Decision Processes – Discrete Stochastic Dynamic Programming*. Wiley & Sons, Inc., New York.
- Pynadath, D. V., & Tambe, M. (2002). The communicative multiagent team decision problem: Analyzing teamwork theories and models. *Journal of Artificial Intelligence Research*, 16, 389–423.
- Schneider, J., Wong, W.-K., Moore, A., & Riedmiller, M. (1999). Distributed value functions. In *Proceedings of the Sixteenth International Conference on Machine Learning*, pp. 371–378, Bled, Slovenia.
- Seuken, S., & Zilberstein, S. (2007a). Improved memory-bounded dynamic programming for Dec-POMDPs. In *Proceedings of the Twenty Third Conference on Uncertainty in Artificial Intelligence*, Vancouver, BC, Canada.
- Seuken, S., & Zilberstein, S. (2007b). Memory-bounded dynamic programming for Dec-POMDPs. In *Proceedings of the Twentieth International Joint Conference on Artificial Intelligence*, pp. 2009–2015, Hyderabad, India.
- Seuken, S., & Zilberstein, S. (2008). Formal models and algorithms for decentralized decision making under uncertainty. *Autonomous Agents and Multi-agent Systems*. To appear.
- Sutton, R. S., Precup, D., & Singh, S. (1999). Between MDPs and semi-MDPs: A framework for temporal abstraction in reinforcement learning. *Artificial Intelligence*, 112, 181–211.
- Suzuki, I., & Yamashita, M. (1999). Distributed anonymous mobile robots: Formation of geometric patterns. *SIAM Journal on Computing*, 28(4), 1347–1363.
- Wolpert, D. H., Wheeler, K. R., & Tumer, K. (1999). General principles of learning-based multi-agent systems. In *Proceedings of the Third International Conference on Autonomous Agents*, pp. 77–83, Seattle, Washington.
- Xuan, P., Lesser, V., & Zilberstein, S. (2001). Communication decisions in multi-agent cooperation: Model and experiments. In *Proceedings of the Fifth International Conference on Autonomous Agents*, pp. 616–623, Montreal, Canada.